

**MAKE  
YOUR  
MARK**



SINGAPORE  
GOOD  
DESIGN  
2025

# **WINNER'S DIRECTORY**



# CONTENT

---

01

About Design Business  
Chamber Singapore (DBCS) &  
Singapore Good Design(SG Mark)

02

Chairman's Message

03

2025 Jurors (First Screening)

04

2025 Jurors (Second Screening)

05

Top Winners  
• Platinum  
• Gold  
• Special Mention

06

SG Mark Winners 2025  
• Architecture  
• Digital Design  
• Experience Design  
• Product Design  
• Spatial Design  
• Special Category:  
Silver Futures  
• Sustainable Design  
• Visual Design

07

Past Top Winners 2024  
• 2024 Top Winners  
• 2024 Japan's Good Design  
Award (G-Mark) Winners

08

Special Thanks  
• Partnerships  
• Sponsors  
• Contact Us



# DESIGN BUSINESS CHAMBER SINGAPORE (DBCS)

Design Business Chamber Singapore (DBCS) is the nation's leading multidisciplinary design chamber, advocating Better Business by Design since 1985.

The chamber brings together business leaders, designers, and academia to drive innovation and use design as a catalyst for sustainable growth. Through cross-industry partnerships and global connections, DBCS elevates professional standards and creates business opportunities.

Advancing a pluralistic design approach to address business challenges, DBCS proudly celebrates 40 years of helping individuals and businesses flourish by design.



# SINGAPORE GOOD DESIGN (SG MARK)

The Singapore Good Design (SG Mark) is a benchmark of good design and quality.

DBCS launched Singapore Good Design (SG Mark) in 2013 in partnership with the Japan Institute of Design Promotion (JDP) that founded the prestigious Good Design Award (G Mark).

SG Mark was established to set the benchmark for exceptional design quality that impacts businesses and communities in Singapore and beyond. Good design has become a source of growth and productivity in the economy as organisations recognise the value of investing in excellent design principles, processes and offerings.







## HONG KHAI SENG

President,  
Design Business Chamber  
Singapore (DBCS)  
Chairman,  
Singapore Good Design  
(SG Mark)

“**DESIGN GOES BEYOND FORM  
& FUNCTION; IT'S ABOUT THE  
LEGACY WE LEAVE BEHIND.**”

That's the spirit of this year's theme, Make Your Mark.

As we celebrate the winners today, we also reflect on how the submissions reveal evolving priorities in our industry. This year, there's a clear emphasis on community-driven solutions that improve everyday experiences and create more inclusive spaces.

An example is Gallery G(ai)le + Musebox by NCS NEXT, in collaboration with the National Gallery. Aimed at making the world's largest collection of Southeast Asian art more approachable, especially for newer or younger visitors, the team created an AI-powered guide that allows for open conversations about the artworks. It draws connections to contemporary culture—from history and identity to music and film—helping people engage with art in a way that feels relevant, personal, and easy to understand.

Another project is Accessible Sights by Trigger Design and Beyond Vision International. The initiative trains visually impaired individuals to become docents at Enabling Village, using tactile guidebooks, Bluetooth audio cues, and hands-on embossing tools to lead multisensory tours that empower them and create inclusive experiences for all visitors.

We're also seeing more and more designers turning to 3D and 4D printing. One example of this is TessaCast by Innovation Factory and Castomize. Developed as an alternative to traditional fiberglass casts, the 4D-printed orthopedic cast adapts to the body's natural contours for a more precise and adaptable fit. It also addresses the issue of medical waste by at least 30% with its reusable design.

Interestingly, we've also observed a steady increase in entries from government agencies and public-sector bodies—an encouraging sign of how design is being embraced to improve civic systems, public spaces, and social equity.

A great example is the myResponder App by the Singapore Civil Defence Force. First launched a decade ago, the app alerts members of the public to nearby fire and medical cases, enabling swift action to save lives and improve Out-of-Hospital Cardiac Arrest survival rates and mitigate minor fires. The latest version, released last year, now features real-time responder tracking, in-app chat, and guided emergency response—helping over 200,000 users act faster and smarter. As of December last year, community first responders have saved 97 lives using the app.

Besides our designers who push boundaries and produce work that stands for something, I'd also like to take this time to acknowledge the clients and organisations that believe in the power of design, and our jurors who generously dedicate their time and expertise to evaluate the many entries. Because SG Mark is not just an awards platform but a community effort. Through this collaboration, we help raise standards, spark conversations, and show what's possible when we put design at the heart of problem-solving. It's a shared effort, and one that benefits not just the industry, but society as a whole.

Because of you, SG Mark continues to grow in relevance and reach.

Let us keep making our mark—together—as we build a more thoughtful, inclusive, and resilient world through design.

# 2025 JURORS

FIRST SCREENING

The jury panel made up of esteemed industry leaders from each respective category will run through the evaluation guidelines and information provided by the participants online. From here, they will ascertain if a product has achieved the criteria necessary to receive the SG Mark and projects shortlisted for second screening.

MALAYSIA



**ADELA ASKANDAR**  
Director,  
Studio Bikin Architects

SINGAPORE



**ADRIAN ANG**  
Sustainability &  
New Business,  
Chye Thiam Maintenance

SINGAPORE



**ADRIAN LAI**  
Founding Principal,  
Meta Architecture

INDIA



**ASHWINI DESHPANDE**  
Co-Founder & Director,  
Elephant

SINGAPORE



**CELINE NG**  
Founder &  
Creative Director,  
Fraction Design Studio

TAIWAN



**CHEN JEN-FENG**  
Design Manager,  
Qisda Corporation

GERMANY



**CHRISTOPH GREDLER**  
Design Lead,  
Google

HONG KONG



**CORRIN CHAN**  
Director,  
AOS. Architecture

SINGAPORE



**DIONE SONG**  
Chief Executive Officer,  
Love, Bonito

SINGAPORE



**ALAN KUEH**  
Founder & Director,  
(AK+) Archipedia

SINGAPORE



**ALISTAIR NORRIS**  
Founder & Designer,  
brief.

SINGAPORE



**ANTHONY TAN**  
Associate Dean,  
School of Fashion  
Studies, Nanyang  
Academy of Fine Arts

SINGAPORE



**EMILY SIM**  
Director, Panelogue,  
Co-Founder,  
Superstructure

SINGAPORE



**GOY ZHENRU**  
Principal Architect,  
Goy Architects

SINGAPORE



**HANSON HO**  
Creative Director,  
H55



SINGAPORE



**HILARY LOH**

Design Director,  
2nd Edition

SINGAPORE



**JACQUELINE YEO**

Director,  
Plystudio Architects

SINGAPORE



**JANICE CHIA**

Founder &  
Managing Director,  
Ageing Asia

SOUTH AFRICA



**JULIET KAVISHE**

Lead Juror for Spatial  
Design, Executive Board  
Member, Pan Afrikan  
Design Institute

SINGAPORE



**KARIN AUE**

Lead Juror for  
Sustainable Design,  
Senior Lecturer,  
National University  
of Singapore,  
Partner, Chemistry

SINGAPORE



**KC YONG**

President,  
Human Factors &  
Ergonomics Society  
of Singapore

SINGAPORE



**JAWN LIM**

Associate Professor,  
Singapore Institute  
of Technology, Visiting  
Professor, Stanford  
University, Chief Design  
Officer, Singapore  
Productivity Centre

TAIWAN



**JIMMY CHANG**

CEO, UID Create,  
Chairman,  
Chinese Industrial  
Design Association

MALAYSIA



**JOE CHAN**

Principal, DesignTone  
Interior Practice

SINGAPORE



**KEITH OH**

Lead Juror for Experience  
Design, Head of Product  
Design, Carousel

SINGAPORE



**KELLY CHIN**

Co-Founder & Director,  
d'Phenomenal

SINGAPORE



**KEN CHUANG**

Founder,  
TITO Associati

HONG KONG



**JOEY HO**

Design Partner,  
P A L Design Group

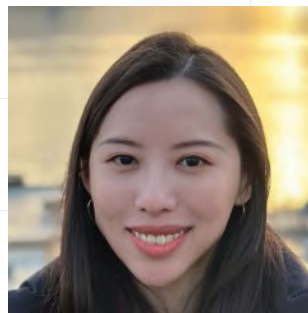
SINGAPORE



**JONATHAN YUEN**

Lead Juror for  
Visual Design  
Founder,  
Creative Director, Roots

SINGAPORE



**JOY NG**

UX Lead,  
Digital Society Products,  
GovTech Singapore

SINGAPORE



**KEYNES YEO**

Co-Founder,  
Greydient Lab

SINGAPORE



**LEE JUNG-JOO**

Associate Professor,  
Deputy Head (Research),  
Division of Industrial  
Design, National  
University of Singapore

SINGAPORE



**LIN WEIZHANG**

Founder &  
Design Principal,  
Superfat Designs



SINGAPORE



**MAISH NICHANI**

Co-Founder,  
PebbleRoad

SINGAPORE



**MARIO VAN DER MEULEN**

Lead Juror for Digital  
Design, Executive Design  
Strategy Consultant,  
mvdmdesigns

HONG KONG



**MAY MAY WONG**

Experience  
Strategy Director,  
Accenture Song

SINGAPORE



**PRISCILLA LUI**

Co-Founder &  
Design Director,  
Studio Juju

AUSTRALIA



**RACHEL WYE**

Managing Director,  
Good Design Australia

SINGAPORE



**RODNEY LOH**

Lead Juror for  
Product Design,  
Founder,  
NextofKin Creatives

SINGAPORE



**MING TAN**

Founding  
Executive Director,  
Tech for Good Institute,  
Advisor, COMO Group

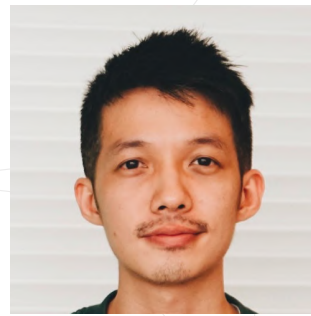
SINGAPORE



**NATHAN YONG**

Founder, Nathan Yong  
Design, Co-Founder &  
Design Director, Grafunkt

SINGAPORE



**NORMAN TEH**

Product Design Leader

SINGAPORE



**RONNIE TAN**

Creative Director,  
Landscape, WATG

SINGAPORE



**SONNY CHIONH**

Lead Juror for Architecture,  
Executive Director, RSP  
Architects Planners  
& Engineers

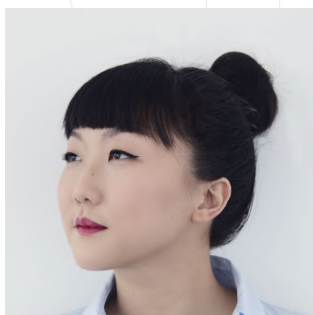
CHINA



**SRINI R. SRINIVASAN**

Professor of Industrial  
Design & Chief  
Operations Officer,  
Design Innovation  
Institute Shanghai

SINGAPORE



**OLIVIA LEE**

Founder &  
Principal Designer,  
Olivia Lee Studio

SINGAPORE



**ONG KAI HOW**

Lead Juror for Fashion,  
Senior Vice President,  
Singapore Operations,  
Raffles Education

INDIA



**PRADYUMNA VYAS**

President-Elect,  
World Design Organisation

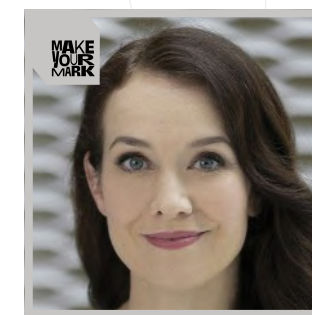
TAIWAN



**SU CHIAO-CHUN**

Founder &  
Creative Director,  
23Design

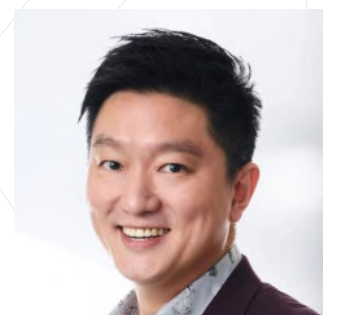
SINGAPORE



**TAMSIN  
GREULICH-SMITH**

Lead Juror for Silver  
Futures, Director, School  
of X, DesignSingapore  
Council, Co-Learning  
Faculty Member, Centre for  
Healthcare Innovation

SINGAPORE



**TAN SZUE HANN**

Head of Sustainability  
(Real Estate) &  
Deputy General Manager,  
Sustainable Urban  
Renewal, Keppel

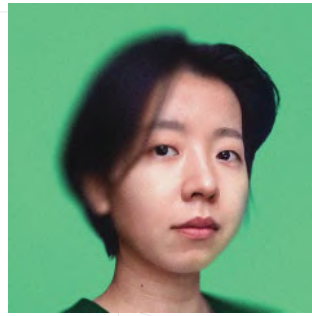
CHINA



**TONY WONG**

Partner,  
IDEO

SINGAPORE



**WEI C.**

Principal Designer,  
Glyphwright

SINGAPORE



**YU YAH-LENG**

Founding Creative Director  
/ Principal, Foreign Policy  
Design Group

SINGAPORE



**WENDY WONG**

Managing &  
Creative Director,  
55 Minutes

SINGAPORE



**WINNIE KWAN**

Lead UX Designer,  
Government Digital  
Products, GovTech  
Singapore



## 2025 JURORS

### SECOND SCREENING

The second round of judging sets the benchmark for outstanding design standards and quality. The jurors meticulously examine the actual entries at a screening exposition and grade the products accordingly before convening to reach a mutual concession on the award winners. In certain cases, such as to determine recipients deserving of the Gold or Platinum Mark and to examine architectural structures, an additional screening process may be conducted either through presentations or on-site judging. Entries of exceptional calibre may be conferred the Platinum or Gold awards, the highest accolades for the Mark.

JAPAN



**HIROKI SATO**

Ph. D. Design | Professor,  
Department of Design,  
Chiba Institute  
of Technology

Doctorate (in Design) obtained at Graduate School of the University of Tsukuba. Sato specializes in studies of kansei (sensitivity) evaluation on design. He worked in design development of automobiles at Honda R&D Co., Ltd. and served as a full-time lecturer at Nagoya Zokei University of Art & Design prior to taking up his current position at Chiba Institute of Technology in 2007. President, the Japanese Society for the Science of Design. Member, the Japan Society of Kansei Engineering. Chairperson of the Qualifications and Examinations Committee, the Japan Industrial Design Association. President, Street Design Research Organization. Co-author of “Product Design [Revised Edition] 105 Essential Knowledge for Product Development” (co-author), etc.

SINGAPORE



**DAWN LIM**

Executive Director,  
DesignSingapore Council

As Executive Director of DesignSingapore Council (Dsg), Dawn sets the vision and strategy for Singapore’s national agency for design.

Since taking over the reins in 2022, she has positioned Singapore Design for the future – focusing on design’s role in shaping emerging technology, sustainability and systems of care. She also oversaw the relaunch of Singapore Design Week held every September and the debut of Dsg’s global showcase, Future Impact, at Milan Design Week 2023 and again in 2024 and 2025. She is also the Co-Commissioner of the Singapore Pavilion at the Venice Biennale Architecture and leads Singapore’s highest design accolade – the President’s Design Award.

She has two decades of experience in public and private sector trade agreements, policymaking, partnership development and industrial strategy in Asia and Europe. She honed her business and commercial acumen in the shipping industry at PSA Corporation, and put that to good use subsequently at the Singapore Economic Development Board attracting the world’s top companies to invest in the country to drive economic growth.

She holds a Bachelor of Science in International Relations from Georgetown University and a Master of Science from the Stanford Graduate School of Business. Dawn has presented on the power of design across international platforms such as the UNESCO Creative Cities Network, SXSW, ChangeNow Summit, Intercorp Festival of Innovation, Design Principles and Practices Conference, Singapore Design Week, as well as with partners like JLL, Stagwell, Deloitte Centre for the Edge, WGSN. She is a UK Design Ambassador, advisory member to the Seoul Design Award and has been invited as a jury member on a wide range of design platforms including the James Dyson Award and Aoyama Design Forum Award.

SINGAPORE



**LILLIAN SHIEH**

Head of Design Practice,  
GovTech

Lillian Shieh is a design researcher, product strategist and service designer. She currently leads the Design Practice at GovTech, supporting designers, promoting best practices for inclusive design, and exploring emerging technologies for developing digital services for citizens, businesses, and public officers.

Her experience includes collaborating with the World Health Organization and Pacific member states to build innovation capabilities. She also built and led Johnson & Johnson's Asia Pacific Design Lab, integrating design methodologies into business processes, and establishing design as a strategic function.

As a researcher and strategist, Lillian has led teams that created successful new product and service concepts for clients like J&J, Intel, Telefónica, and Samsung. Her approach, rooted in systems thinking, team development, and experimentation, creates trusted partnerships and products that people want to use.

SINGAPORE



**MARK TEO SHAN CHIAN**

Assistant Professor,  
Business, Communication  
and Design, Singapore  
Institute of Technology

Mark received his Bachelor of Architecture from the University of Melbourne, Australia, and his Master of Science in Environmental Management from the National University of Singapore. He is currently an assistant professor of Design and Sustainability at the Singapore Institute of Technology (SIT) and is the vice chair of the Sustainability Education Committee.

Prior to joining SIT in a full-time capacity, Mark ran his own architecture practice, and has crafted and overseen projects of varying scales, from small lighting installations and exhibitions to conservation shophouses and multi-unit high rise residential development. He is deeply curious about the way people live and their collective stories and this is reflected in his architecture and design practice.

As a member of the Singapore Institute of Architects, Mark served on its Sustainability Committee in 2009, during which he was a contributor for the institute's policy paper on the attributes of a sustainable built environment. His current research interests lie in the intersection of design, environmental sustainability and people. Specifically, he is interested in the redesign of the urban food system in view of climate change.

SINGAPORE



**TUNG CHING YEW**

President, Society  
of Interior Design,  
Singapore, Founder  
& Managing Director,  
Spirit Of Design Analogy

Tung is the Founder and Managing Director of SODA® (Spirit Of Design Analogy Pte Ltd), an international award winning spatial design firm with more than 350 completed projects in 8 countries. SODA is named as one of the Top 50 Finalist in Design Distinction Awards 2020 by IFI (International Federation of Interior Architects / Designers) and has won multiple design awards worldwide.

Tung has more than 25 years of industrial experience in Design Consultancy and Project Management. His unique design methodologies has transformed corporate businesses to stay relevant in current and future markets. The proven track records includes international MNCs, government agencies and local SMEs, such as; Infineon Technologies, RHB Bank, BP De Silva Group, Ogawa International, Changi Airport Group, Singapore Totalisator Board (Tote Board), Starhub, SK Jewellery Group, etc. In addition, Tung has been contributing to design education for more than 15 years as an adjunct lecturer for Diploma and Degree programmes with local design institutions and polytechnics.

In July 2022, Tung was elected as President for Society of Interior Designers Singapore (SIDS), a non-profit organization that is committed to elevate the standards of Interior Design practice in Singapore. He is also the Chairman of Singapore Interior Design Awards 2020.

**MAKE  
YOUR  
MARK**

# PLATINUM WINNER

SG Mark Top Winners 2025

PRODUCT DESIGN

## CASTOMIZE - TESSACAST



**CLIENT**  
CASTOMIZE TECHNOLOGIES  
PTE. LTD.

**DESIGNER**  
A\*STAR INNOVATION FACTORY  
@SIMTECH (INNOVATION  
FACTORY, CASTOMIZE)

Tessacast is a revolutionary 4D-printed orthopedic cast that offers a lightweight, breathable, and waterproof alternative to traditional fiberglass casts.

It adapts to the patient's contours for a custom fit and provides enhanced support and flexibility. With a built-in clasp system to prevent premature removal, Tessacast ensures optimal healing.



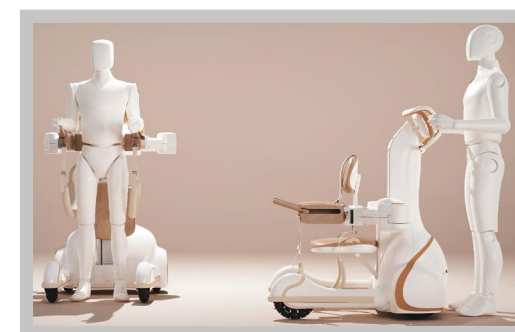
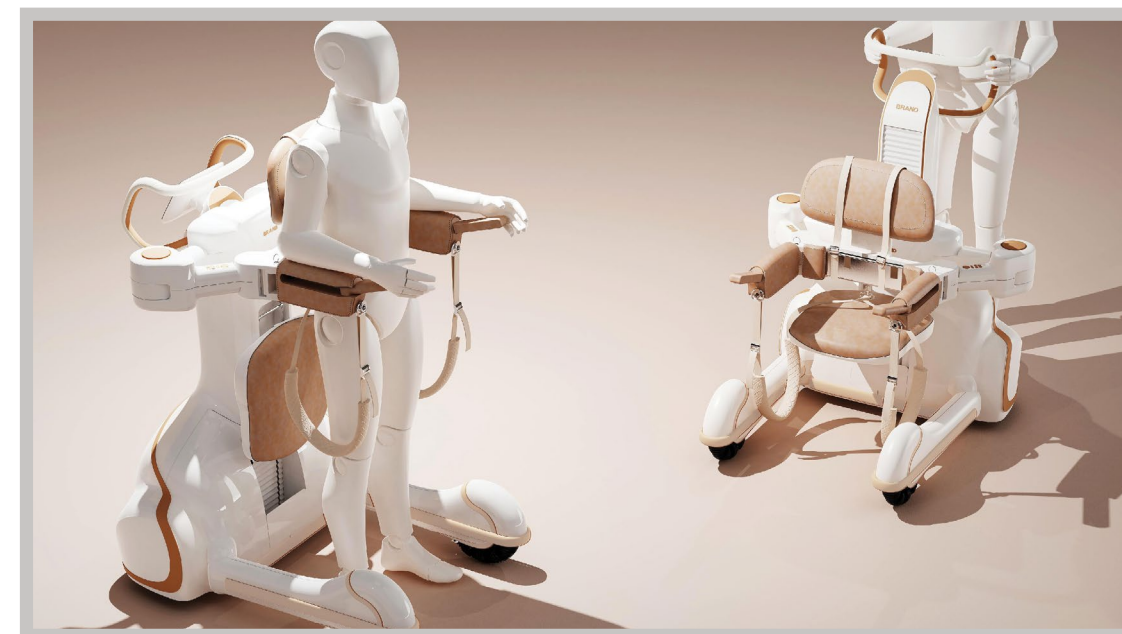
**MAKE  
YOUR  
MARK**

# GOLD WINNER

SG Mark Top Winners 2025

SPECIAL CATEGORY: SILVER FUTURES

## REBALANCE – STEADY STEPS, CONFIDENT MOVES



**DESIGNER**  
ABILITY ROBOTICS PTE. LTD.  
(LI LEI, ANG WEI TECH)

ReBalance, born from a decade of research at Nanyang Technological University, uses therapist-inspired robotic arms and Proactive BalanceGuard technology to help users regain walking independence. It provides invincible support during balance loss, ensuring safety while maintaining confidence and dignity.

# ACCESSIBLE SIGHTS

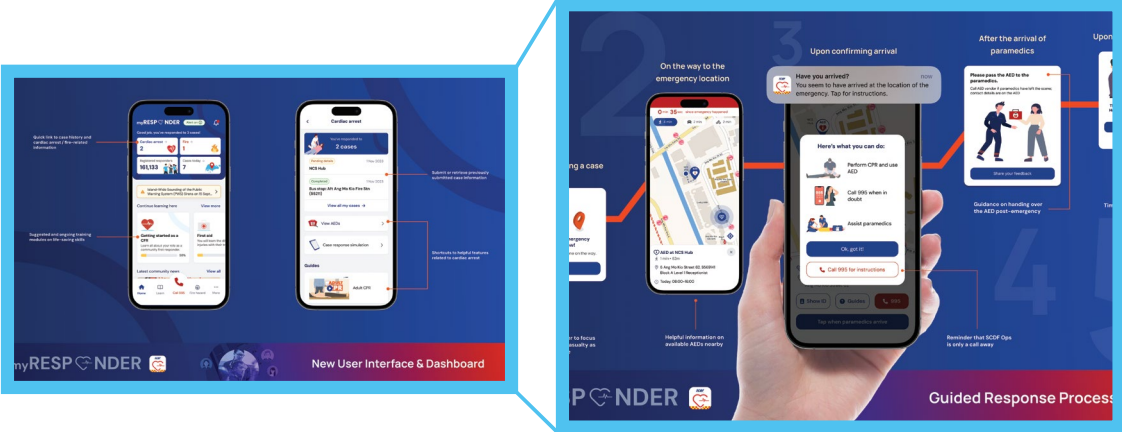


**CLIENT**  
ENABLING VILLAGE,  
SG ENABLE

**DESIGNER**  
TRIGGER DESIGN &  
BEYOND VISION  
INTERNATIONAL

Accessible Sights trained visually impaired (VI) individuals to lead multisensory tours at Enabling Village. Using tactile tools and audio cues, VI docents guided sighted guests, fostering empathy and inclusion. The project redefined roles, offered employment, and set a model for inclusive tourism – now expanded to Gardens by the Bay.

# SCDF MYRESPONDER APP



**CLIENT**  
SINGAPORE CIVIL  
DEFENCE FORCE

**DESIGNER**  
NCS

Developed with HTX and NCS, the upgraded myResponder App enables Community First Responders to react swiftly to cardiac arrest and fires with real-time location sharing, guided response, and in-app communication.

Beyond emergencies, new peacetime features like e-learning community stories deepen engagement.



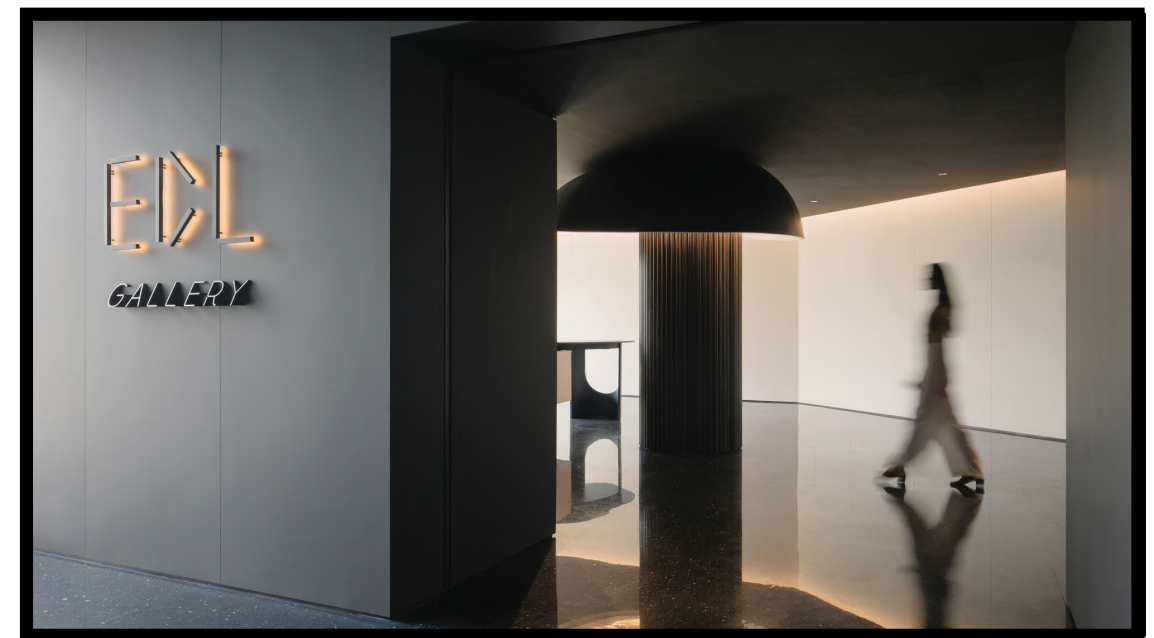
**MAKE  
YOUR  
MARK**

# SPECIAL MENTION

SG Mark Top Winners 2025

SPATIAL DESIGN

## EDL SHOWCASE GALLERY



**CLIENT**  
EDL PTE LTD

**DESIGNER**  
THE AFTERNAUT GROUP  
(GWEN TAN)

More than just a showroom, the EDL Gallery redefines how we engage with materials – blending design, education, and sustainability into a thought-provoking journey. Located in an industrial estate, it surprises visitors with immersive zones, light-labs for testing finishes, and a physical gallery complemented by a digital portal that is accessible through the 3D QR code.



# CPF'S LIFE SUPERMART



**CLIENT**  
CENTRAL PROVIDENT  
FUND BOARD (CPF)

**DESIGNER**  
PLUS COLLABORATIVES

Life's Supermart turns financial planning into a supermarket-themed experience, helping CPF members in their 30s-40s align money with life goals. Participants “shop” for symbolic items, then receive personalised financial tips at checkout. With over 6,500 attendees and 89% intending to act, the activation made CPF planning relatable, actionable, and empowering.

# GALLERY G(AI)LE + MUSEBOX



**CLIENT**  
NATIONAL GALLERY  
SINGAPORE

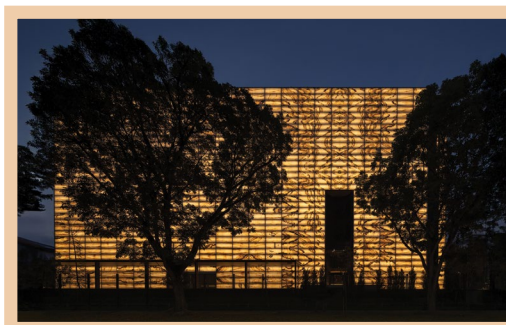
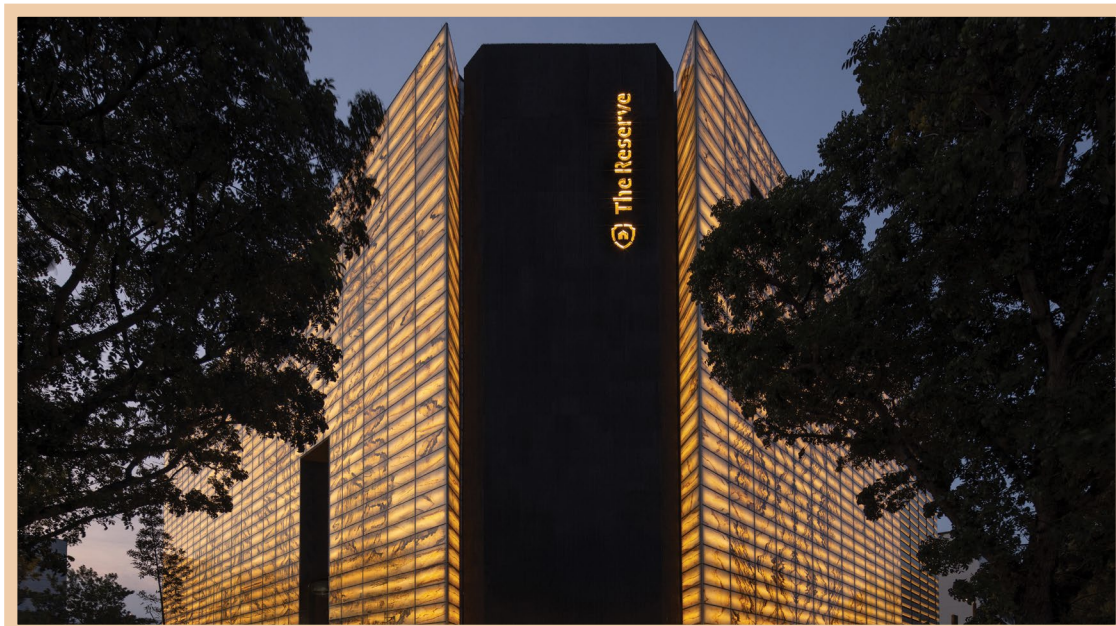
**DESIGNER**  
NCS X NATIONAL GALLERY  
SINGAPORE

G(ai)le is a conversational art guide that makes art more accessible and engaging at the National Gallery Singapore. Blending regional art history with pop culture, it offers personalised, multilingual tours in a relatable voice – from tackling colonialism to quoting memes. With built-in accessibility features and curator tools, G(ai)le transforms museum visits into meaningful conversational experiences.



ARCHITECTURE

# THE RESERVE



**CLIENT**  
THE RESERVE PTE LTD

**DESIGNER**  
MONOLAB STUDIO

The Reserve in Changi is a striking example of adaptive reuse, transforming an old electronics warehouse into a high-security vault for precious commodities.

Its design blends tradition and innovation, with a facade of laminated thinned onyx symbolising both the solidity of wealth and transparency of emerging financial technologies.



**MAKE  
YOUR  
MARK**

# ARCHITECTURE

SG Mark Winners 2025

ARCHITECTURE

## 18 CROSS



**CLIENT**  
PAG

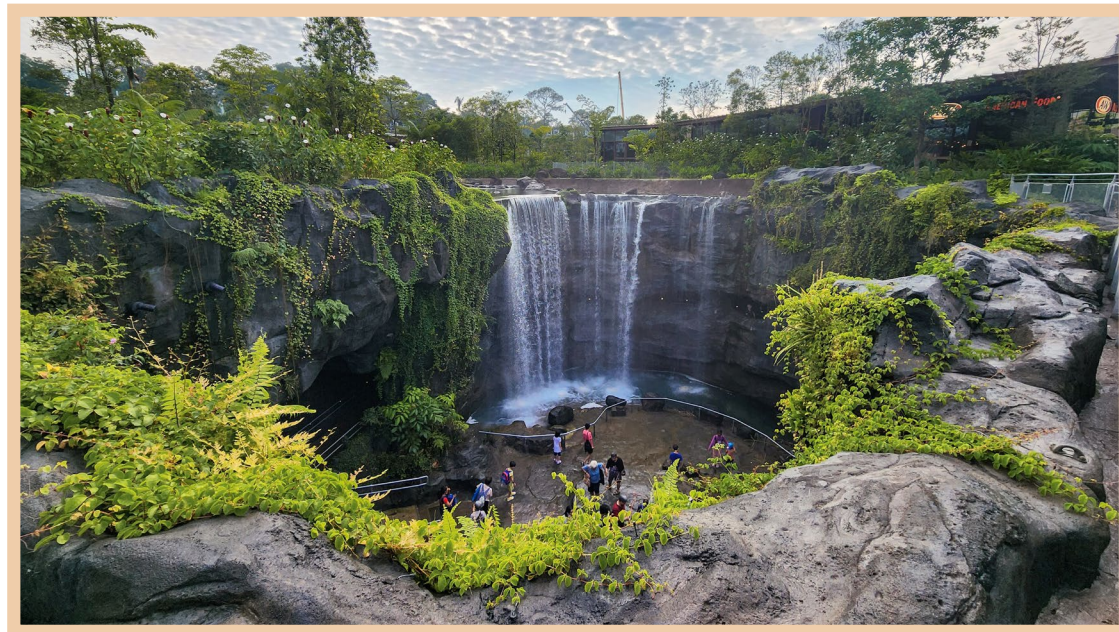
**DESIGNER**  
BENOY

18 Cross is a landmark urban regeneration project in Singapore's CBD that blends heritage preservation with modern design.

Transforming the former Cross Street Exchange, the 14,00-sqm site now features restored shophouses, a four-story podium, and a 15-story Grade A office tower, creating a vibrant, pedestrian-friendly hub.



# BIRD PARADISE

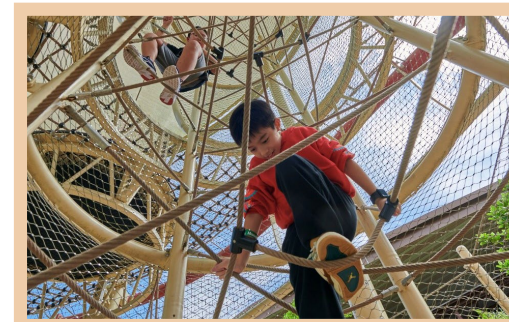


**CLIENT**  
MANDAI WILDLIFE GROUP

**DESIGNER**  
RSP ARCHITECTS PLANNERS  
& ENGINEERS (PTE) LTD

Bird Paradise, Southeast Asia's largest bird park, redefines avian experiences through sustainable, immersive habitat design. Spanning 17.3 hectares within Mandai Wildlife Reserve, it replaces Jurong Bird Park with eight climate-responsive aviaries that mimic global ecosystems using passive cooling, natural ventilation, and water features to support biodiversity and reduce energy use.

# BIRD PARADISE: TREETOP PLAY



**CLIENT**  
MANDAI WILDLIFE GROUP

**DESIGNER**  
PLAYPOINT (SINGAPORE)  
AND CARVE (NETHERLANDS)

Located within Bird Paradise in Singapore, the Treetop Play is an immersive, nature-inspired playground that lets children explore the world through the eyes of a bird. Designed around a bird's journey – taking off, landing, and navigating earth and sky – it encourages curiosity, empathy for nature, and physical activity through climbing, nesting, and discovery.



# CAVERN HOUSE

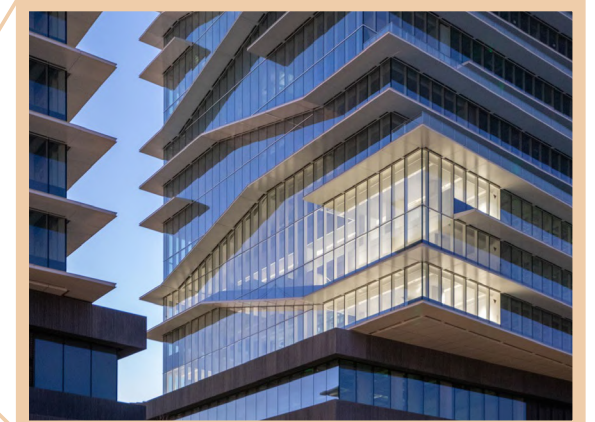
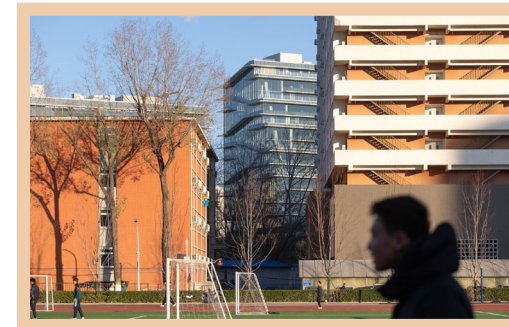
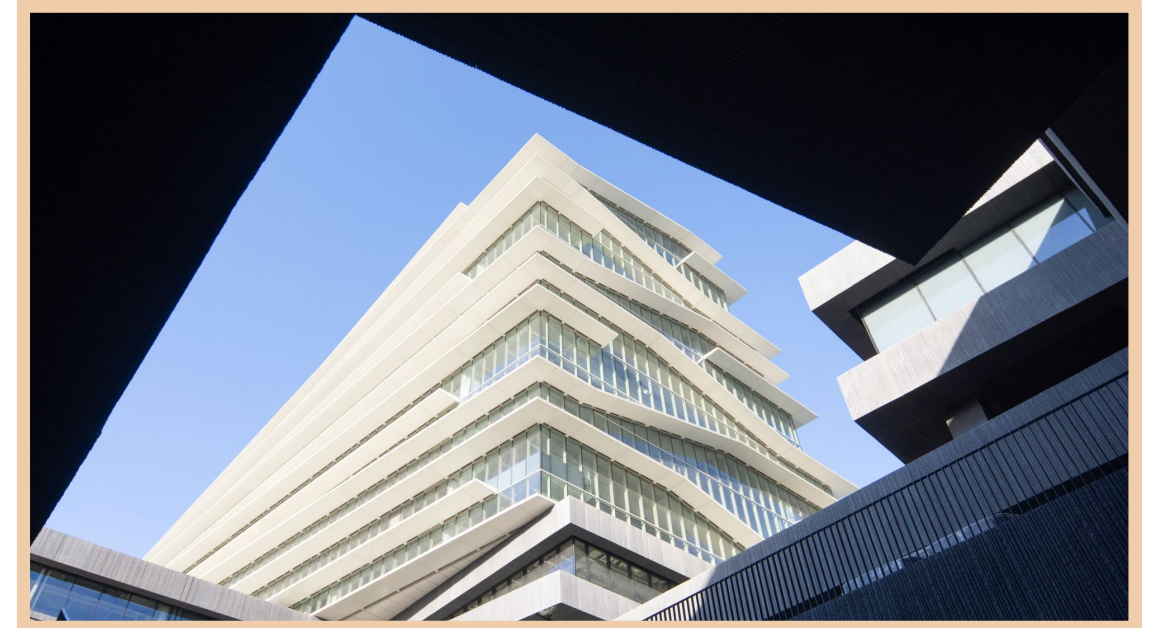


**CLIENT**  
SERENE LIM

**DESIGNER**  
SUPER ASSEMBLY  
(ISKANDAR IDRIS,  
PATRICK SIAH & ASLAM SALIM)

Cavern House conceals its wonders behind a blank white facade, inviting quiet curiosity. Within, spaces unfold like chambers in a cave – fluid, connective, and calm. Anchored by shared rituals in the kitchen and living room, and crowned by an observatory bathed in sky light, it is a home where presence matters more than display. A sanctuary shaped for togetherness, mystery, and reflection.

# DONG-PARK (ZHONGGUANCUN DONG-SHENG SCIENCE & TECHNOLOGY PARK)



**CLIENT**  
DONGSHENG NEW ERA  
(BEIJING) TECHNOLOGY  
CO., LTD.

**DESIGNER**  
SOCIETY PARTICULAR  
(ZHUO CHENG ARCHITECTS)

Park-Tech responds to Beijing's complex urban conditions with a simple yet powerful gesture: raise the office, liberate the ground. A terraced podium dissolves into the landscape, enabling public flow, cultural activity, and ecological links. Above, an office tower integrates spiraling communal zones to spark inter-company collaboration. This dual strategy merges urban, environmental, and workplace priorities into a cohesive spatial system.



# LISMANT RETREAT



**CLIENT**  
LISMANT HOTEL GROUP

**DESIGNER**  
SOCIETY PARTICULAR (SOPA)  
(ZHUO CHENG ARCHITECTS)

Perched high in Wenhai at 3,180m, Lismant Retreat blends Naxi tradition with minimalist architecture. Designed by SOPA, the 15-room hotel orients each space towards the Jade Dragon Snow Mountain using GIS precision. Built from volcanic stone and white concrete, it balances social and solitary rituals – tea rooms, pools, quiet sanctuaries – offering a refined take on alpine sustainability.

# ONE HOLLAND VILLAGE



**CLIENT**  
FAR EAST ORGANISATION

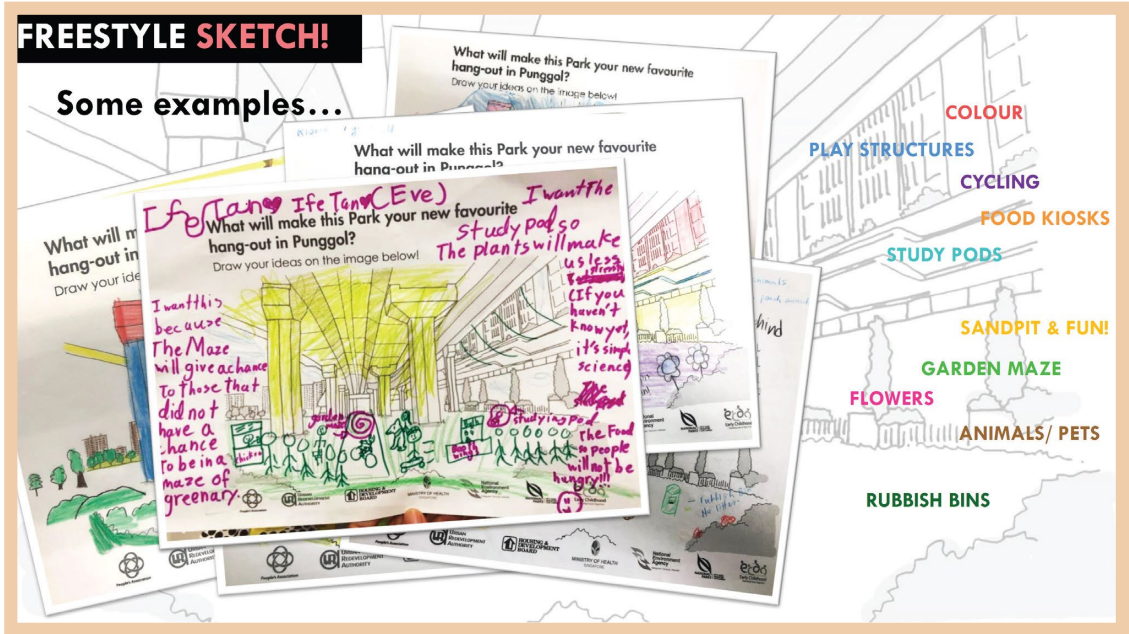
**DESIGNER**  
MKPL ARCHITECTS PTE LTD  
RSP ARCHITECTS PLANNERS  
& ENGINEERS (PTE) LTD

One Holland Village is a community-focused mixed-used development in the heart of Holland Village, blending heritage charm with contemporary living.

Designed to preserve the precinct's bohemian character, it features open buildings, pedestrian-friendly walkways, and shared spaces that foster connection and vibrancy.



# PUNGGOL GREEN: REIMAGINING AN UNDERUTILISED SPACE INTO A COMMUNITY AND SOCIAL SPINE

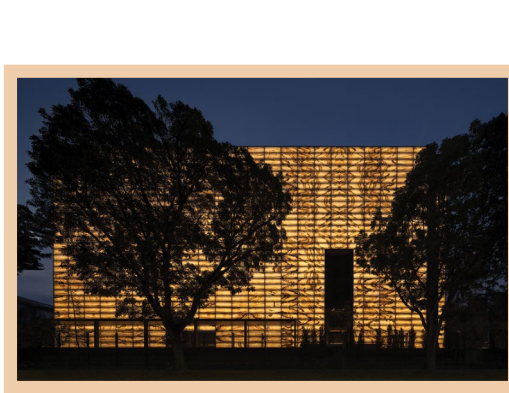


**CLIENT**  
PEOPLE'S ASSOCIATION

**DESIGNER**  
DP GREEN  
(THUN KONGSUB, ONG SIEW LENG, AKIF AZAMAN, NADZIR ZAINAL & MATANAND SRIPAN)

Punggol Green converts a constrained 1.2-hectare transit corridor into a layered, multifunctional public realm. The project tackles limited sunlight, tight setbacks, and 41 existing columns, integrating community feedback into every design move – from material selection to spatial programming. With 30+ native species and 50,000 plants, it promotes urban biodiversity while fostering recreation and connectivity.

# THE RESERVE



**CLIENT**  
THE RESERVE PTE LTD

**DESIGNER**  
MONOLAB STUDIO

The Reserve in Changi is a striking example of adaptive reuse, transforming an old electronics warehouse into a high-security vault for precious commodities.

Its design blends tradition and innovation, with a facade of laminated thinned onyx symbolising both the solidity of wealth and transparency of emerging financial technologies.



ARCHITECTURE

# YEW TEE LIFESTYLE CORRIDOR: OIL DRUM PLAYGROUND



**CLIENT**  
MARSILING-YEW TEE  
TOWN COUNCIL

**DESIGNER**  
PLAYPOINT (SINGAPORE)  
AND KINETICS PLAY

A bold tribute to place and play. Inspired by Yew Tee's industrial past – its name meaning “oil pond” in Teochew – this playground reimagines barrel-shaped forms as vibrant play structure and community icons.

Children climb, slide, and explore, with inclusive features and shaded seating making it a welcome space for all. More than just a playground, it is a place where history and play intersect.

MAKE  
YOUR  
MARK

# DIGITAL DESIGN

SG Mark Winners 2025

DIGITAL DESIGN

## DIGITAL TWIN



**DESIGNER**  
SHENZHEN MEGMT DIGITAL  
TECHNOLOGY GROUP  
(TANG WEI, LUO JIANMIN,  
YAO YAO, HUANG CAIYUN)  
& SHENZHEN SENLA  
CREATIVE MANAGEMENT  
CO., LTD (LEI LONG LONG)

CloudCIM transforms urban management with a 1:1-scale digital twin that merges Building Information Modeling (BIM), Geographic Information System (GIS), Internet of Things (IoT), and real-time data into a vivid, cinema-grade model of the city.

More than a visual tool, it stimulates future scenarios, enabling smart planning, live monitoring, and immersive storytelling.



# GALLERY G(AI)LE + MUSEBOX

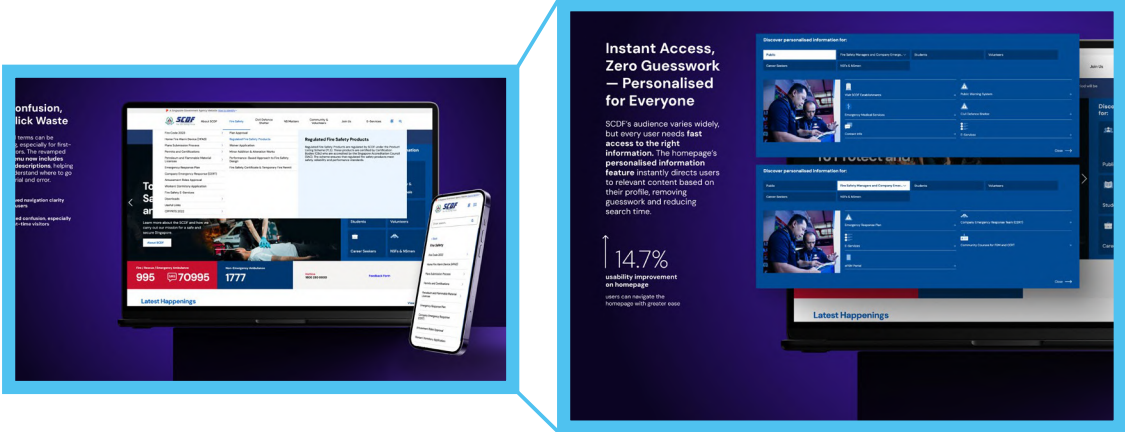
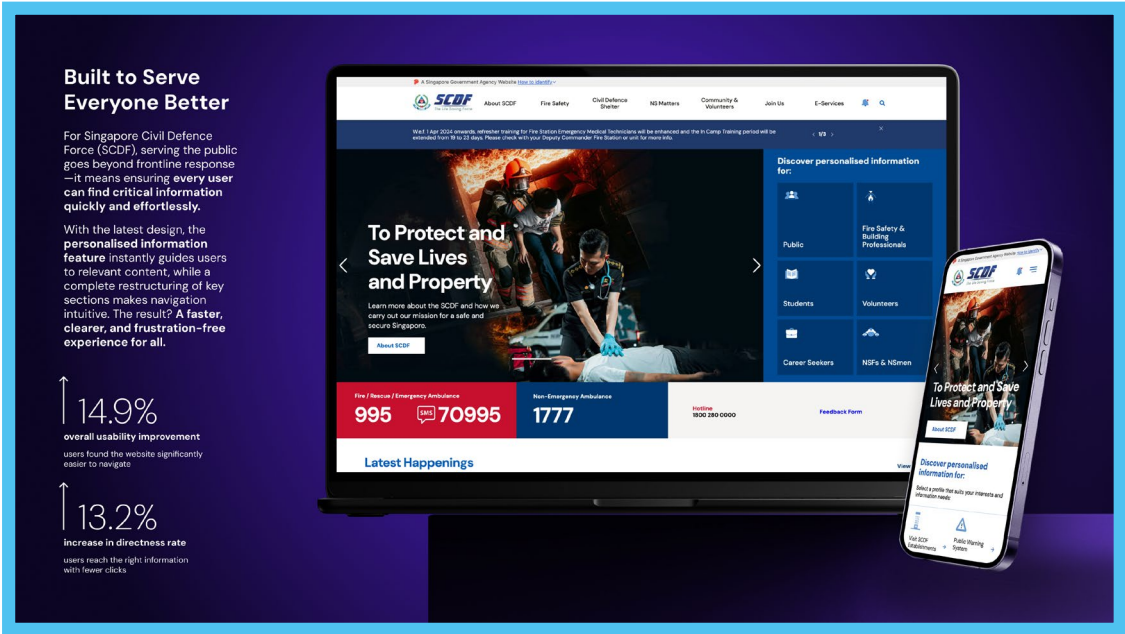


CLIENT  
NATIONAL GALLERY  
SINGAPORE

DESIGNER  
NCS X NATIONAL GALLERY  
SINGAPORE

G(ai)le is a conversational art guide that makes art more accessible and engaging at the National Gallery Singapore. Blending regional art history with pop culture, it offers personalised, multilingual tours in a relatable voice – from tackling colonialism to quoting memes. With built-in accessibility features and curator tools, G(ai)le transforms museum visits into meaningful conversational experiences.

# SCDF CORPORATE WEBSITE



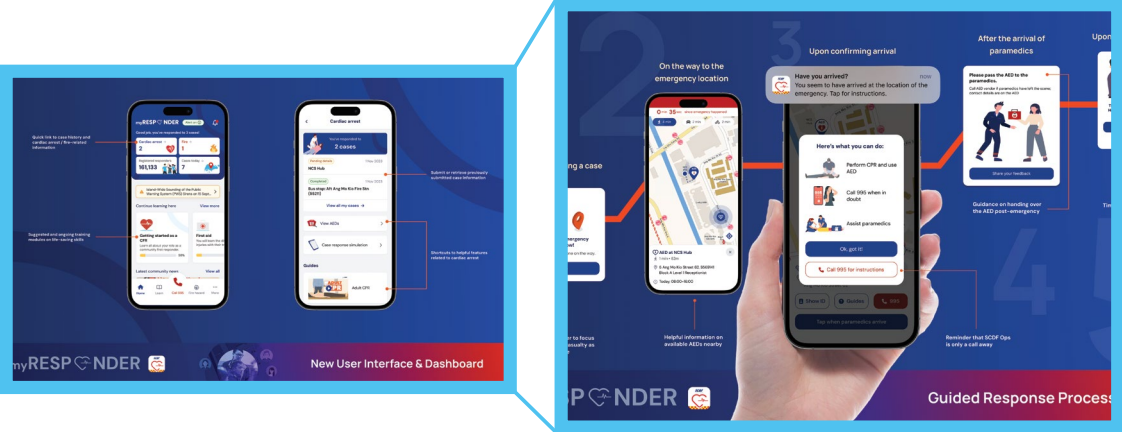
CLIENT  
SINGAPORE CIVIL  
DEFENCE FORCE

DESIGNER  
EY DIGITAL PTE LTD

The SCDF website redesign puts people first in moments that count. Balancing the needs of the public and emergency professionals, the new platform offers a tailored experience from the first click – helping users find critical information without friction. Guided navigation, improved E-Services, and clearer menus has made emergency support faster, smarter, and more accessible for all.



# SCDF MYRESPONDER APP



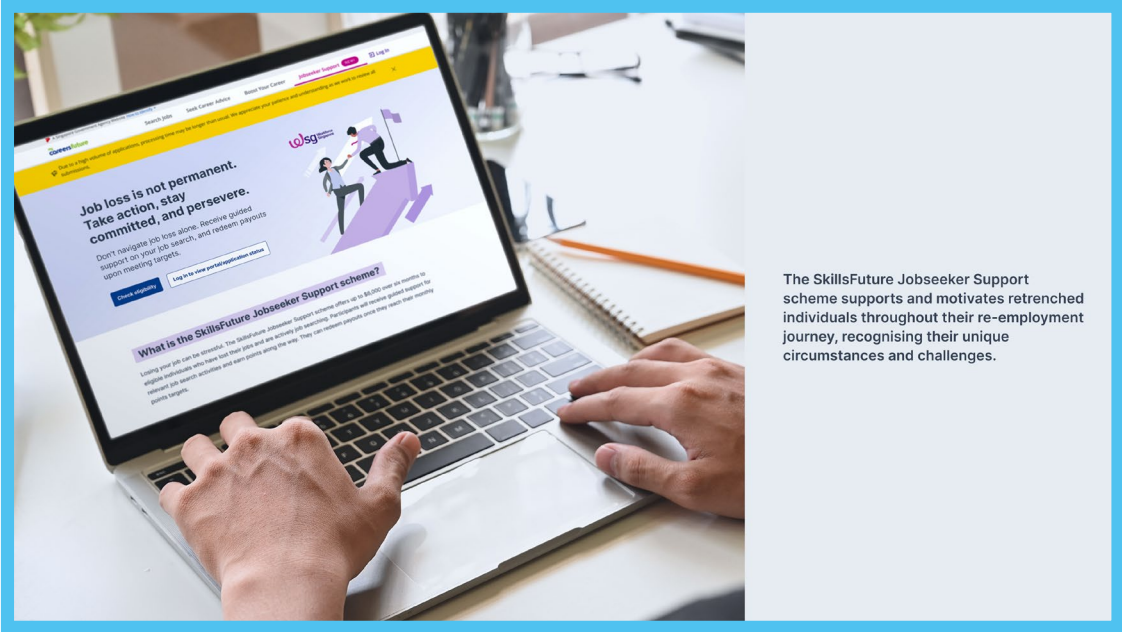
**CLIENT**  
SINGAPORE CIVIL  
DEFENCE FORCE

**DESIGNER**  
NCS

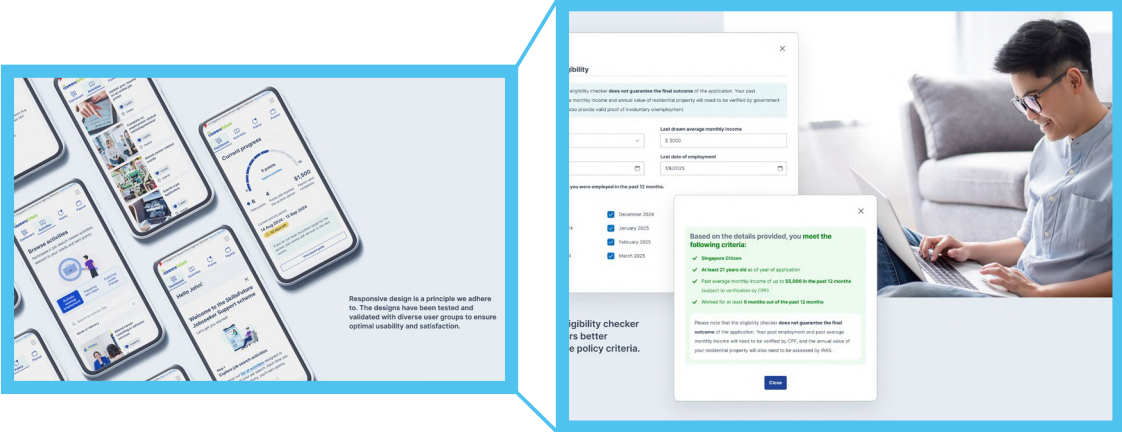
Developed with HTX and NCS, the upgraded myResponder App enables Community First Responders to react swiftly to cardiac arrest and fires with real-time location sharing, guided response, and in-app communication.

Beyond emergencies, new peacetime features like e-learning community stories deepen engagement.

# SKILLSFUTURE JOBSEEKER SUPPORT SCHEME



The SkillsFuture Jobseeker Support scheme supports and motivates retrenched individuals throughout their re-employment journey, recognising their unique circumstances and challenges.



**DESIGNER**  
GOVERNMENT TECHNOLOGY  
AGENCY SINGAPORE

SkillsFuture Jobseeker Support is a digital platform designed to guide retrenched individuals through re-employment with empathy and clarity. It simplifies eligibility checks, rewards meaningful job search efforts, and automates payouts – reducing stress while encouraging action. With flexible, user-driven activity tracking and strong governance safeguards, it empowers job seekers to regain confidence and re-enter the workforce with purpose.

**MAKE  
YOUR  
MARK**

# EXPERIENCE DESIGN

SG Mark Winners 2025

EXPERIENCE DESIGN

## ACCESSIBLE SIGHTS



**CLIENT**  
ENABLING VILLAGE,  
SG ENABLE

**DESIGNER**  
TRIGGER DESIGN  
& BEYOND VISION  
INTERNATIONAL

Accessible Sights trained visually impaired (VI) individuals to lead multisensory tours at Enabling Village. Using tactile tools and audio cues, VI docents guided sighted guests, fostering empathy and inclusion. The project redefined roles, offered employment, and set a model for inclusive tourism – now expanded to Gardens by the Bay.



# CPF'S LIFE SUPERMART



**CLIENT**  
CENTRAL PROVIDENT  
FUND BOARD (CPF)

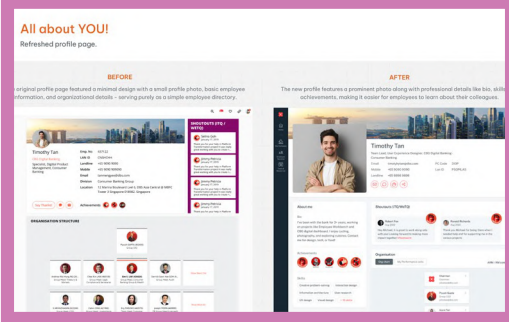
**DESIGNER**  
PLUS COLLABORATIVES

Life's Supermart turns financial planning into a supermarket-themed experience, helping CPF members in their 30s-40s align money with life goals.

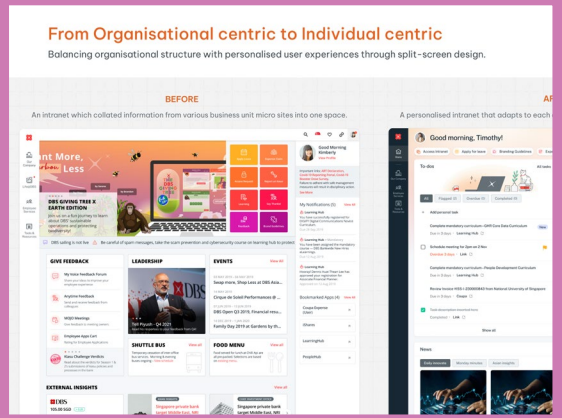
Participants “shop” for symbolic items, then receive personalised financial tips at checkout. With over 6,500 attendees and 89% intending to act, the activation made CPF planning relatable, actionable, and empowering.



# DBS INTRANET



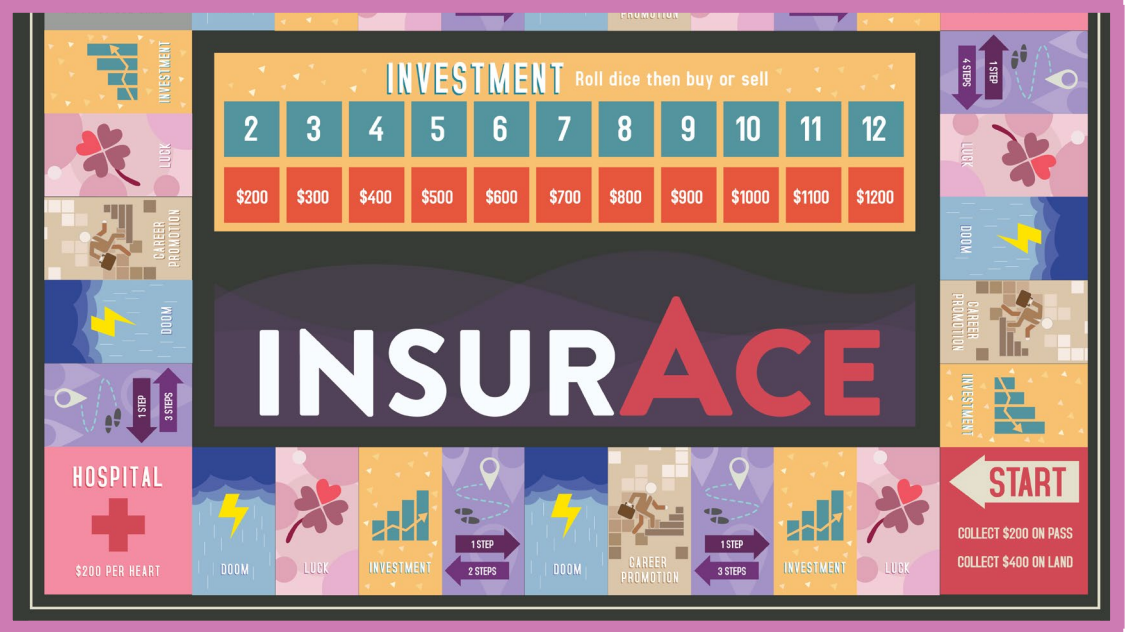
**DESIGNER**  
DBS BANK  
(DBS ENT DESIGN TEAM)



MyIntranet enhances DBS employee productivity and collaboration by streamlining daily workflows through a customisable dashboard and 10+ interactive widgets. Built with accessibility and data privacy in mind, it supports both office and remote workers. With over 450,000 tasks completed, MyIntranet simplifies tasks and adapts to employee needs, boosting efficiency by 20% and driving long-term organisational agility.



# DE-MYSTIFYING INSURANCE THROUGH GAMES

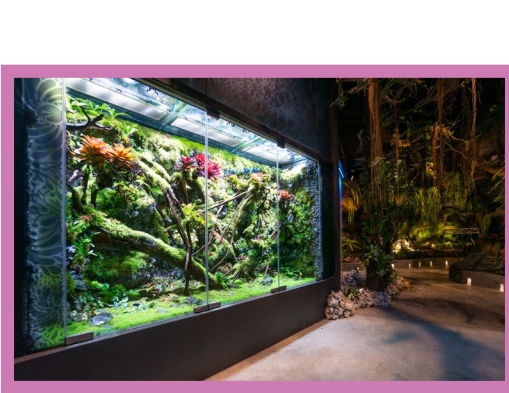


**CLIENT**  
PRUDENTIAL ASSURANCE  
COMPANY SINGAPORE

**DESIGNER**  
CAPITAL GAINS STUDIO  
(INSURACE BOARD GAME)  
& MR SEBASTIAN GOH  
(INSURACE CARD GAME)

Prudential Singapore is transforming how we understand insurance with InsurACE and InsuRACE, two interactive games that make insurance education fun and easy. InsurACE is a strategic, hour-long board game that stimulates real-life risks and rewards, while InsuRACE is a quick 15-minute challenge to build the best insurance portfolio. These games promote financial literacy and support informed insurance decisions across communities.

# FLORAL FANTASY (GARDENS BY THE BAY)



**DESIGNER**  
GARDENS BY THE BAY

Opened in 2019, Floral Fantasy offers a unique floral experience, easing crowding at the conservatories. Visitors journey through themed zones featuring fresh, dried, and preserved flowers, water features, and a 4D dragonfly ride. The attraction also functions as a distinctive event venue. It showcases the artistry of horticulture through rotating displays and partnerships with Disney and foreign embassies.



# GALLERY G(AI)LE + MUSEBOX

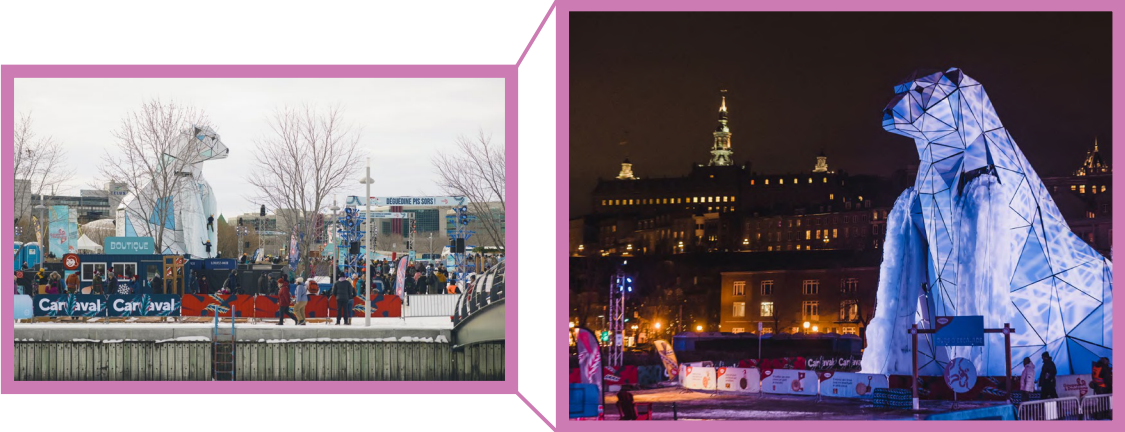


**CLIENT**  
NATIONAL GALLERY  
SINGAPORE

**DESIGNER**  
NCS X NATIONAL GALLERY  
SINGAPORE

G(ai)le is a conversational art guide that makes art more accessible and engaging at the National Gallery Singapore. Blending regional art history with pop culture, it offers personalised, multilingual tours in a relatable voice – from tackling colonialism to quoting memes. With built-in accessibility features and curator tools, G(ai)le transforms museum visits into meaningful conversational experiences.

# NANOUK, THE ICE CLIMBING POLAR BEAR



**CLIENT**  
CARNAVAL DE QUÉBEC

**DESIGNER**  
STUDIO OVERALL

Nanouk, the Ice Climbing Polar Bear is a 45-foot eco-friendly climbing structure at Carnaval de Québec. Featuring three routes and a reusable design, it blended art, advantage, and climate awareness.

With its “winter beach” theme and striking form, Nanouk drew global attention, engaged visitors as active participants, and redefined sustainable, immersive event experiences.



MAKE  
YOUR  
MARK

# PRODUCT DESIGN

SG Mark Winners 2025

PRODUCT DESIGN

## 3D PRINTING IN WESTERN AND CHINESE MEDICINE HIGH RISK PROCEDURE TRAINING AND SIMULATION



**CLIENT**  
PAMELA YOUDE NETHERSOLE  
EASTERN HOSPITAL

**DESIGNER**  
DR TONG

A multidisciplinary team launched the Artificial Intelligence Acupoint Finder (AIAF) – a 3D-verified AI tool designed to locate 670 acupoints across 14 meridians, enhancing elderly care in PYNEH's geriatric ward. Combining laser-scanned anatomical data with machine learning, AIAF supports accurate point identification for therapeutic exercises, bridging Chinese and Western medicine.

PRODUCT DESIGN

# ACCUSTREAM SENSOR FAUCETS COLLECTION



**CLIENT**  
AMERICAN STANDARD

**DESIGNER**  
LIXIL GLOBAL DESIGN  
TEAM, ASIA

AccuStream Sensor Faucets combine touchless technology with sleek design for high-traffic commercial and hospitality spaces. A front-facing sensor ensures intuitive use, while the curve spout prevents water buildup, reducing maintenance. Low-flow aerators conserve water without compromising performance, aligning with sustainability goals and lowering operating costs.

PRODUCT DESIGN

# ALIENWARE PRO WIRELESS GAMING HEADSET



**DESIGNER**  
DELL TECHNOLOGIES  
(EXPERIENCE DESIGN GROUP)

Designed alongside Team Liquid and top Esports athletes for more than 18 months, this wireless headset delivers championship-level performance. Its 50mm graphene drivers and hybrid ANC immerse you in crisp, distraction-free audio, while dual AI mics ensures crystal-clear communication.



# ARSK 001 | A TRIBUTE TO THE SOUND



**CLIENT**  
ARSK | LOOK &  
SOUND DIFFERENT

**DESIGNER**  
OXYGEN-LTD | TAKE A  
BREATH OF FRESH AIR  
(ANTHONY AURÉLIEN  
RIBOUT, SERGE KOKKINIS)

ARSK 001 is not just a speaker – it is a culmination of five years of innovation. Featuring patented acoustic and thermal technologies, premium materials, and a standout design, it delivers industry-leading performance and endurance.

With future products in the pipeline, ARSK is building a new benchmark for wireless audio.

# CASTOMIZE - TESSACAST



**CLIENT**  
CASTOMIZE TECHNOLOGIES  
PTE. LTD.

**DESIGNER**  
A\*STAR INNOVATION FACTORY  
@SIMTECH (INNOVATION  
FACTORY, CASTOMIZE)

Tessacast is a revolutionary 4D-printed orthopedic cast that offers a lightweight, breathable, and waterproof alternative to traditional fiberglass casts.

It adapts to the patient's contours for a custom fit and provides enhanced support and flexibility. With a built-in clasp system to prevent premature removal, Tessacast ensures optimal healing.

# DELL 32 PLUS 4K QD-OLED MONITOR (S3225QC)



**DESIGNER**  
DELL TECHNOLOGIES  
(EXPERIENCE DESIGN GROUP)

A harmonious fusion of premium display technology and intelligent audio design. The Dell 32 Plus 4K QD-OLED monitor delivers stunning 4K visuals with infinite contrast, 99% DCI-P3 color, and smooth 120Hz performance – all enhanced by AI-powered spatial audio that adapts to your movement for truly immersive entertainment.

# DELL XPS 14 LAPTOP (9440)



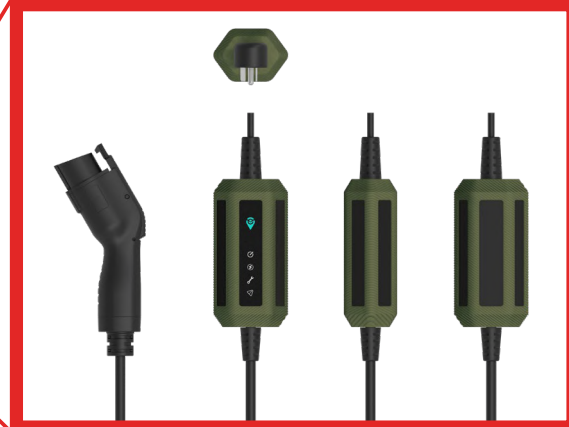
**DESIGNER**  
DELL TECHNOLOGIES  
(EXPERIENCE DESIGN GROUP)

The Dell XPS 14 merges precision-machined aluminum with seamless design – featuring a haptic touchpad and zero-lattice keyboard for a smooth, unified interface. Its glass-free 4K+ OLED display offers stunning clarity, while directional audio surrounds the user in immersive sound. Built with low-carbon materials and thoughtful finishes, it is a laptop that embodies performance, purity, and sustainability.



PRODUCT DESIGN

# EVLEI SERIES 3.5KW PORTABLE EV CHARGER



**DESIGNER**  
RELEIV INC.  
(ANDREW BAO, YAFEN CHEN,  
RELEIV DESIGN TEAM)

A novel solution to address EV charging scarcity, this compact charger delivers instant power from any household outlet. Its shock-resistant silicon construction offers weatherproof durability with an easy-clean, non-slip surface. Designed for trunk storage and roadside use, it eliminates range anxiety with portable charging when you need it most.

PRODUCT DESIGN

# EVLEI SERIES 7-22KW EV CHARGER

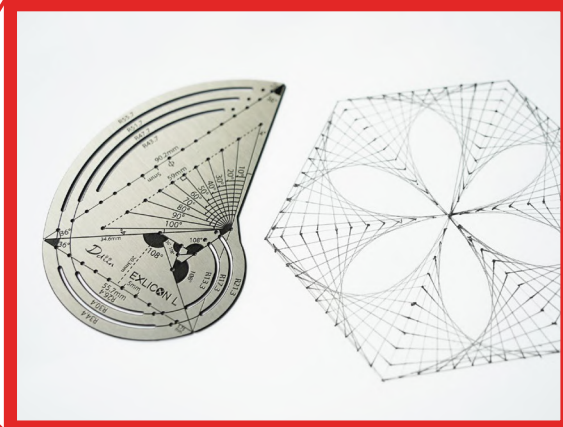
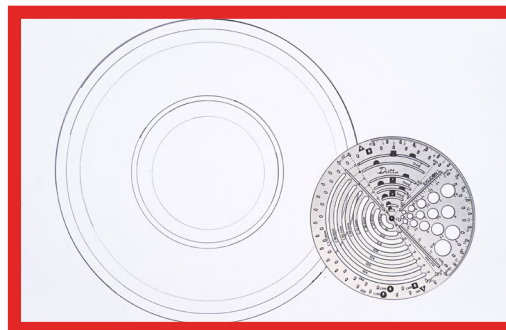
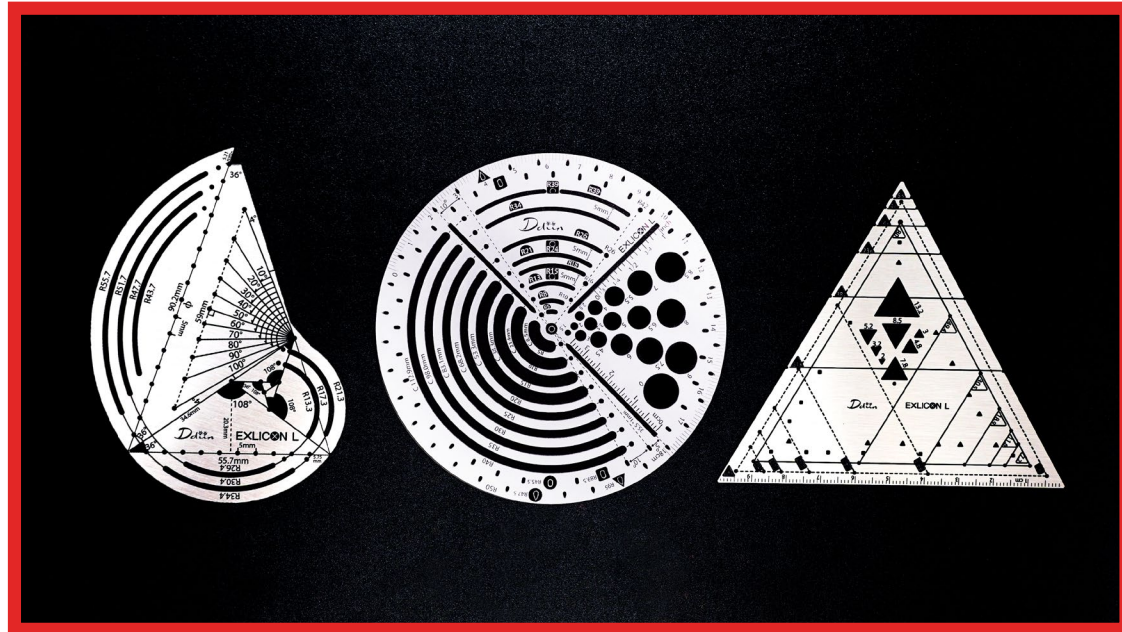


**DESIGNER**  
RELEIV INC.  
(ANDREW BAO, YAFEN CHEN,  
RELEIV DESIGN TEAM)

With the rise of smart cities and electric vehicles, the demand for electric vehicle charging stations, or "charging piles," is increasing. This innovative charging station features a distinctive rounded design, crafted from weather-resistant plastic and eco-friendly paint for durability and sustainability. It also integrates an intelligent backend system and a dedicated service app, allowing users to locate charging stations on the map.



# EXLICON L – PRECISION GOLDEN RATIO TOOLS FOR ART AND GEOMETRY

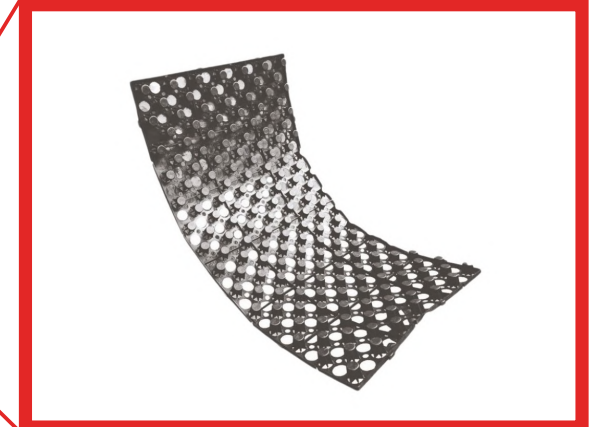
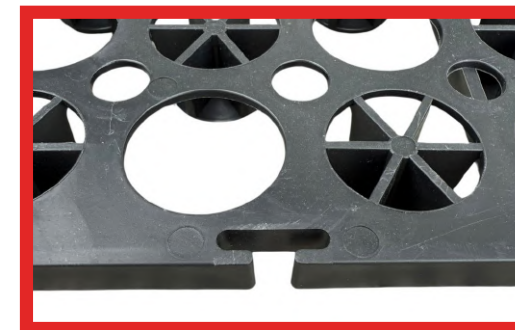
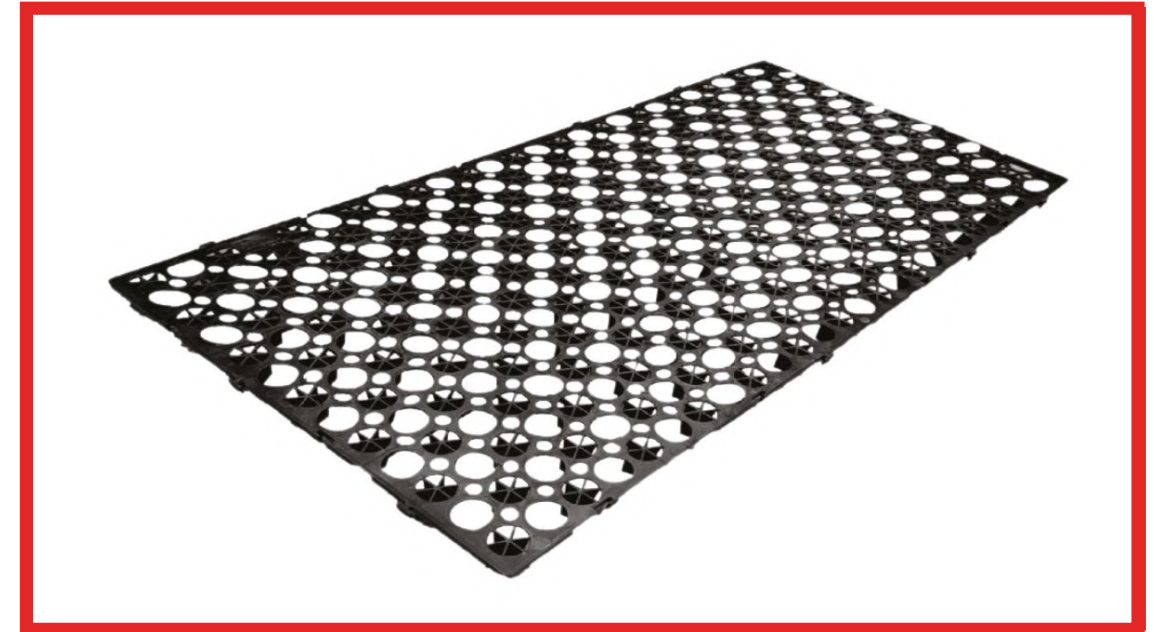


**DESIGNER**  
DDIIN CONCEPT LTD  
(SOFIA LEE PIK SHAN,  
LEE YUK SHUI)

The Tool Set combines the Circle, Triangle, and TG tools to bring precision and golden ratio accuracy to drawing, solving the common issues of freehand sketching. Crafted from durable stainless steel and designed for both beginners and professionals, it supports creativity across culture and disciplines.

The Tool Set streamlines geometric design with precision and portability.

# GRASCELL DB DRAINAGE MODULE



**CLIENT**  
UNISEAL GLOBAL PTE. LTD

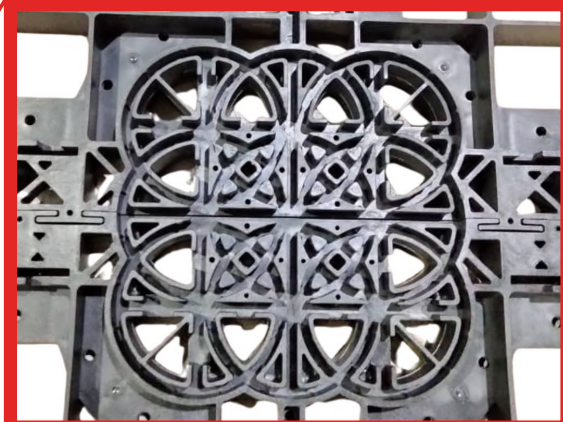
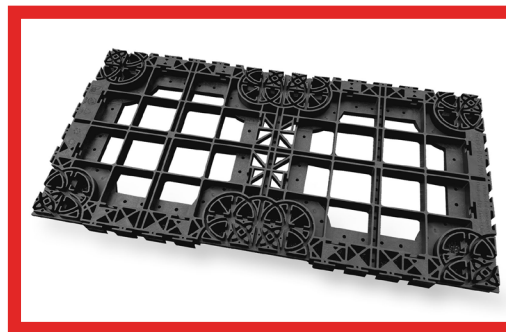
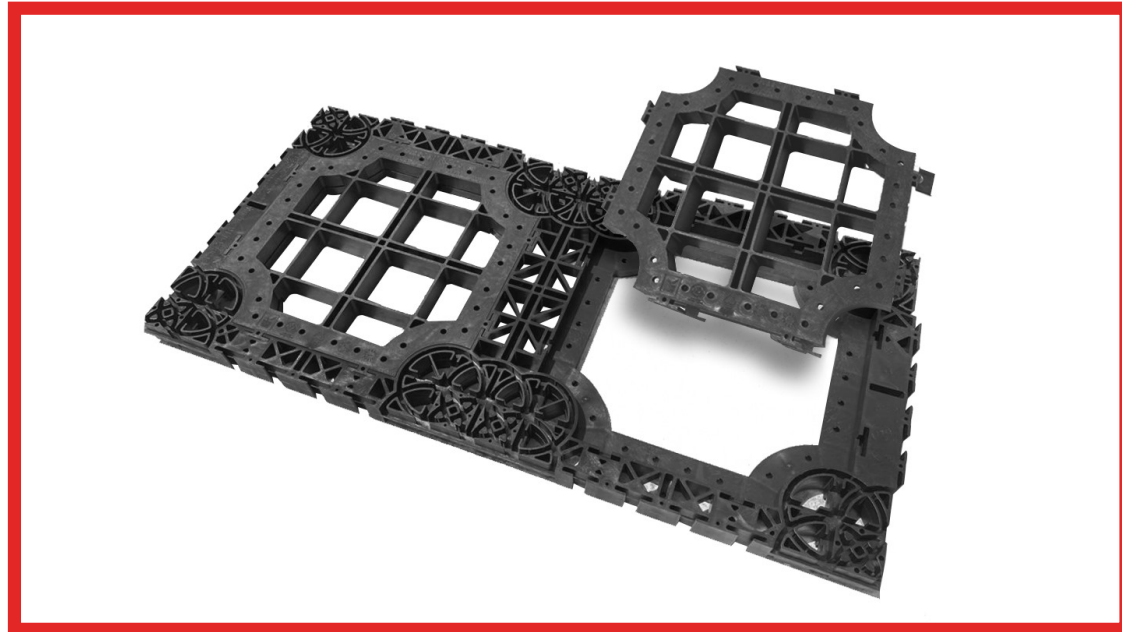
**DESIGNER**  
UNISEAL CREATIVE  
SOLUTIONS PTE LTD  
(JAMES LIM)

Crafted from recycled materials, the GrasCell DB combines smart water control with sustainable design. Its airy structure promotes root health and prevents water damage, all while adapting to sloped or bumpy grounds.

With fewer modules needed to cover large areas and thickness options from 10mm to 75mm, its a versatile, efficient solution for modern green spaces.



# GRASCELL RC1000



**CLIENT**  
UNISEAL GLOBAL PTE. LTD

**DESIGNER**  
UNISEAL CREATIVE  
SOLUTIONS PTE LTD  
(JAMES LIM)

GRASCELL RC1000 is a modular panel made from 100% recycled polypropylene, built for both underground and surface use. It handles stormwater, protects tree roots, and doubles as platform, void fillers, and export pallets.

Lightweight and strong, it is easy to install with just a mallet – saving time and labor. Its interlocking design allows custom sizing, while its recyclability supports circular economy.

# HAPPIE WATER PURIFIER – MIRACLE



**CLIENT**  
HAPPIE SG PTE LTD

Sleek and compact, Miracle by Happie is the thinnest water purifier on the market, measuring just 5.5cm in width. Its 6 customisable temperature and 4 water volumes provide ultimate versatility for any kitchen. With smart features like energy-saving sleep mode, automatic sterilisation every 7 days, and real-time voice guide updates, Miracle combines safety and convenience in a space-efficient design for anyone seeking an efficient, hydration solution.



# HEART® FLUTES COLLECTIONS

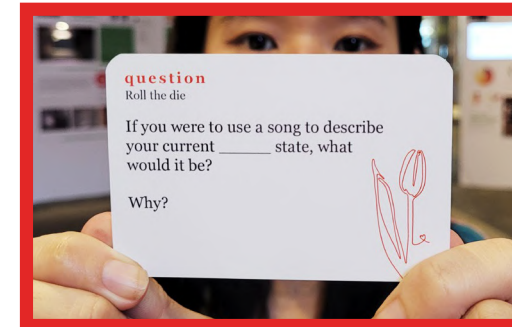


**CLIENT**  
PEPPERWALL PTE LTD

**DESIGNER**  
STUDIONORM  
DESIGN CONSULTANTS  
(DAVID THAM, DERON GOW,  
FELIX HO)

Flutes transforms the workplace with a fresh approach to design, creating adaptable spaces that encourage both collaboration and solitude. The Booth, Lounge, and Bench work in unison to shape versatile environments, offering flexible solutions for noise management and privacy. Engineered for lasting impact, its sustainable, modular design ensures workspaces evolve as fluidly as the ideas within them.

# HELLO EMPATHY



**CLIENT**  
DESIGN SINGAPORE COUNCIL

**DESIGNER**  
WECREATE STUDIO  
(AR. TRECIA LIM) &  
XOPODESIGN (MR. ANDRE TAN)

Hello empathy is a conversation card game developed through a year-long design research project.

Created to foster more inclusive design for persons with autism, the game empowers designers, caregivers, and the public to engage in meaningful conversations that build empathy and awareness of the mental, emotional, and physical aspects of spatial design.



# HP ELITEBOOK ULTRA 14 AI PC



**DESIGNER**  
HP INC. (HP DESIGN TEAM)

This ultra-light 1.4kg business essential harnesses Intel Core Ultra processing with dedicated NPU acceleration to power through AI workloads effortlessly. HP AI Companion transforms productivity with intelligent meeting tools and real-time transcription, while the 5MP presence camera ensures crystal clear collaboration. Enterprise-grade HP Wolf Security safeguards your work with biometric protection and AI threat detection.

# HP ENVY DESKJET 6100



**DESIGNER**  
HP DESIGN TEAM

The HP Envy Deskjet offers versatile, frictionless printing with modern capabilities, making it ideal for everyday photo and document needs. It provides reliable network connectivity, self-healing Wi-Fi, and high quality outputs in a sleek, sustainable design. Committed to sustainability, HP uses 60% recycled content in the printer and 100% recyclable paper-based packaging, blending eco-consciousness with production efficiency for a greener future.

# HP OMEN TRANSCEND 32



**DESIGNER**  
HP INC. (HP DESIGN TEAM)

The OMEN Transcend 32 reinvents the gaming monitor with seamless device switching via OMEN Gear Switch and a built-in KVM, all through a single cable. Its 32" 4K QD-OLED display with 240Hz refresh rate, 0.3ms response time, HyperX audio ensures smooth, immersive gameplay. Tempest Cooling prevents OLED burn-in, while its eco-friendly design uses recycled and ocean-bound plastic – combines top-tier performance with sustainability.

# HP OMNIBOOK ULTRA FLIP 14 INCH 2-IN-1 LAPTOP NEXT GEN AI PC



**DESIGNER**  
HP INC. (HP DESIGN TEAM)

The HP OmniBook Ultra Flip 14 is a lightweight, AI-powered 2-in-1 PC built for freelancers and creators.

It features a 3K OLED display, a 360 hinge for flexible modes, and powerful on-device AI with a 47 TOPS NPU. With intuitive gesture controls, HP AI Companion, and up to 21 hours of battery life, it adapts to any workflow.



# HP Z CAPTIS

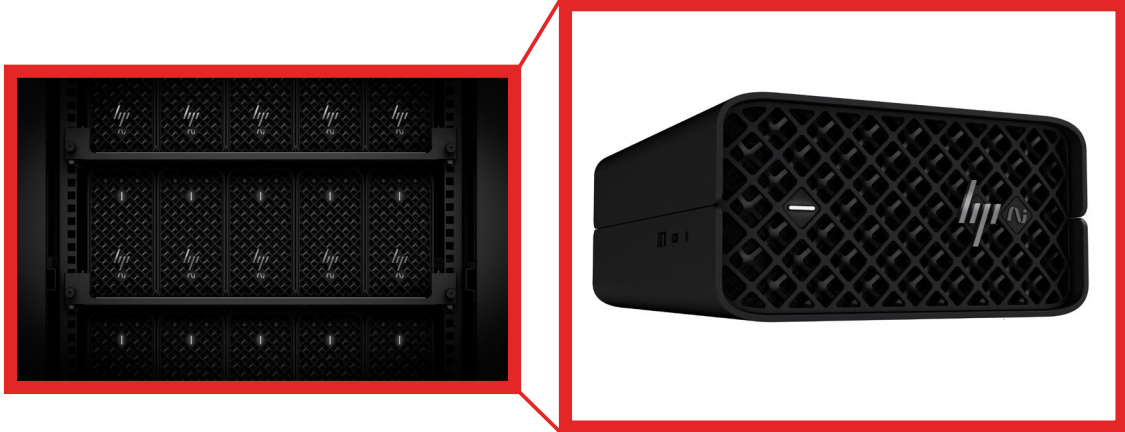
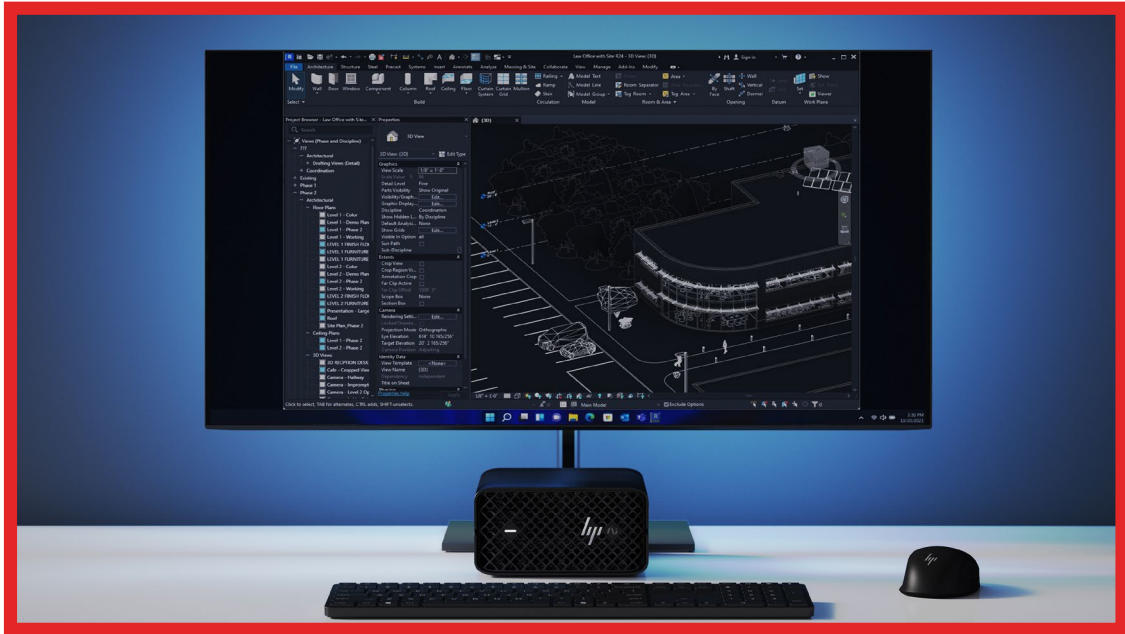


DESIGNER  
HP INC. (HP DESIGN TEAM)

The HP Z Captis, the first digital material capture system integrated with Adobe Substance 3D, revolutionises material scanning across industries.

Its AI-powered 8K capture accurately records textures and colours, while the compact design enables easy on-the-go digitalisation, streamlining workflows and reducing material waste.

# HP Z2 MINI G1A



DESIGNER  
HP INC. (HP DESIGN TEAM)

This revolutionary 3L workstation packs AMD Ryzen AI Max+ PRO power (50 TOPS NPU) for accelerated AI development, 3D rendering, and intensive multitasking.

Its innovative lattice cooling system delivers desktop-class performance while maintaining whisper-quiet operation.



PRODUCT DESIGN

# HP ZBOOK ULTRA 14-INCH G1



**DESIGNER**  
HP INC. (HP DESIGN TEAM)

HP's most compact mobile workstation packs AMD's Strix Halo SOC architecture into a 14-inch frame, delivering 39% better efficiency through integrated CPU, GPU and NPU performance.

The vibrant OLED touchscreen offers perfect colour accuracy for creative work, while the durable 80% recycled aluminum chassis meets rigorous sustainability standards.

PRODUCT DESIGN

# OMEN 35L GAMING TOWER

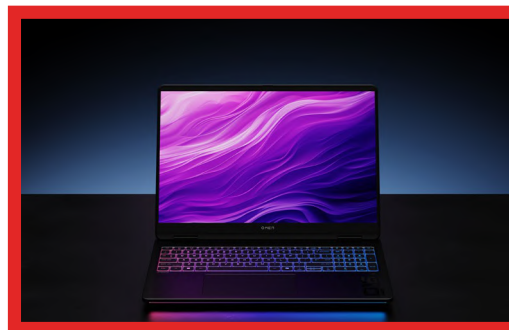


**DESIGNER**  
HP INC. (HP DESIGN TEAM)

The OMEN 35L Gaming Tower delivers high-end thermal performance with advanced airflow and 240mm liquid cooling, cutting temperatures and boosting efficiency by 14%. Ideal for intense gaming, it combines power with style through a transparent glass panel, ARGB lighting, and easy-to-upgrade internals. With future-ready architecture and broad compatibility, it is a powerhouse built to adapt and grow with the gamer.



# OMEN MAX 16"

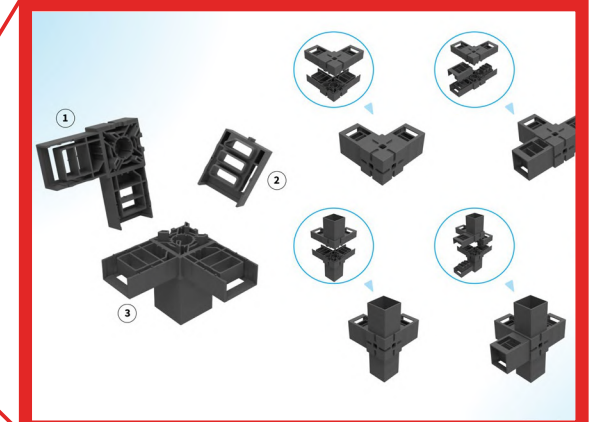
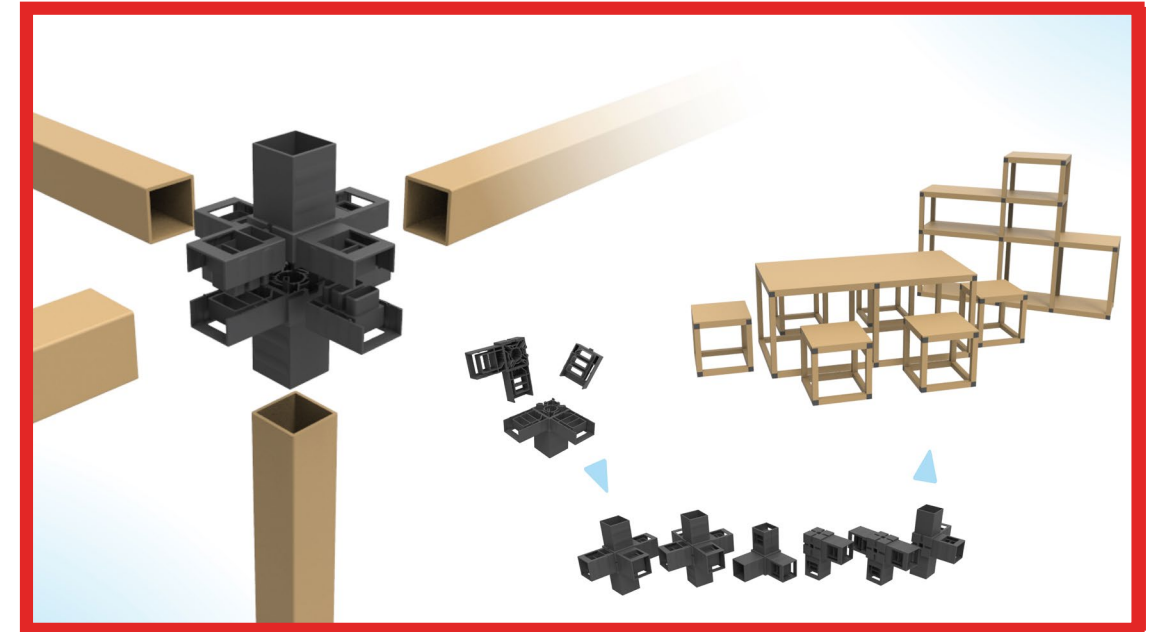


**DESIGNER**  
HP INC. (HP DESIGN TEAM)

Built for gamers who demand top-tier performance, the OMEN Max 16 combines cutting-edge cooling, powerful overclocking, and immersive visuals in a sleek, sustainable design.

With liquid metal and vapor chamber cooling, 2W overclocking via "Unleashed" mode, and a 240Hz WQXGA display, it delivers elite gameplay.

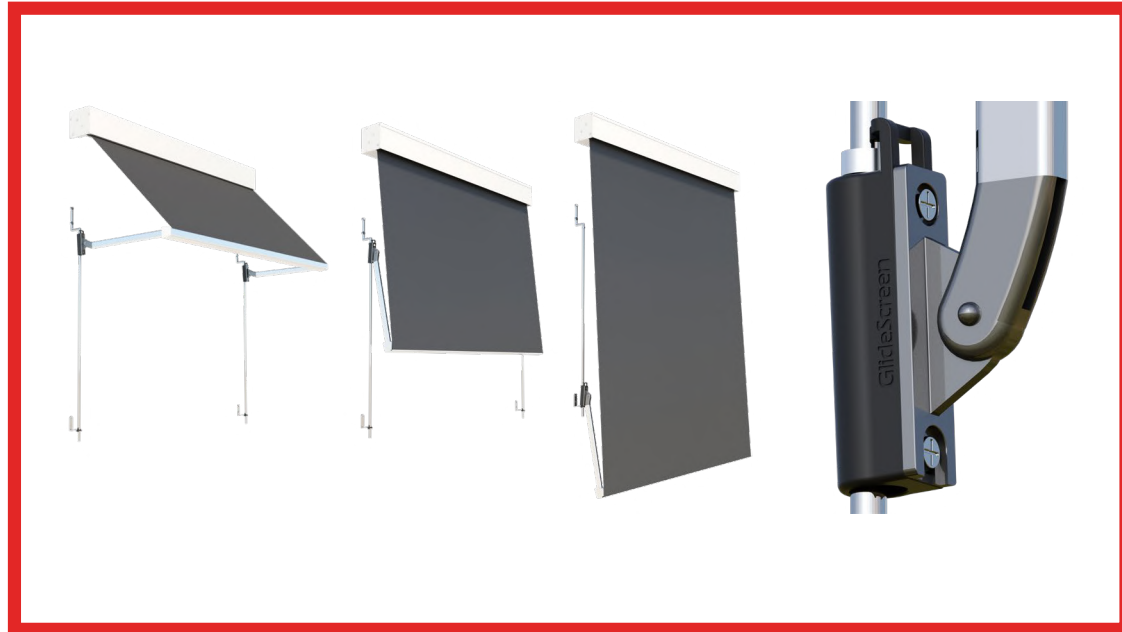
# PAPERCONNECT™



**DESIGNER**  
PAPER CARPENTER PTE LTD  
(ADRIAN CHUA)

PaperConnect is a modular construction system that combines sustainability with creative freedom. Using durable connectors made from recycled textile pellets, it links paper bars and cardboard to form structures like furniture, backdrops, and booths. Its easy assembly and reusable design makes it ideal for temporary setups and customisable projects.

# PIVOT GLIDE AWNING



**DESIGNER**  
TONY HOPKINS

Pivot Glide is a motorised blind system that functions as both an external blind and adjustable awning, offering precise control over sunlight and airflow.

It is ideal for residential, commercial, and hospitality spaces, with voice control and automation for accessibility. Its modular design allows retrofitting, reducing cost and waste while expanding its market reach.

# POLY STUDIO V72



**DESIGNER**  
HP INC. (HP DESIGN TEAM)

Most users expect consistency, simplicity, and high quality, and the Poly Studio V72 is no exception. This next-gen USB video bar for large rooms combines a dual-camera system, speakers, and microphones in one sleek unit. With Poly DirectorAI for smart camera framing and advanced noise-blocking technology, it ensures an optimal, distraction-free experience.



# POLY VOYAGER LEGEND 50 UC



**DESIGNER**  
HP INC. (HP DESIGN TEAM)

Designed for travelers and hybrid workers who value mobility and frequently take calls while on the go, the Poly Voyager Legend 50 UC offers crystal-clear audio even in noisy environments like airports and cafes. With AI-enhanced noise reduction, it filters out background sounds such as traffic or chatter so that you can confidently take a call and be heard clearly wherever you are.

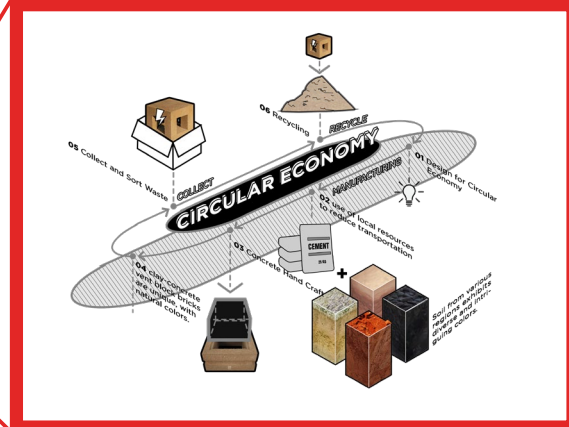
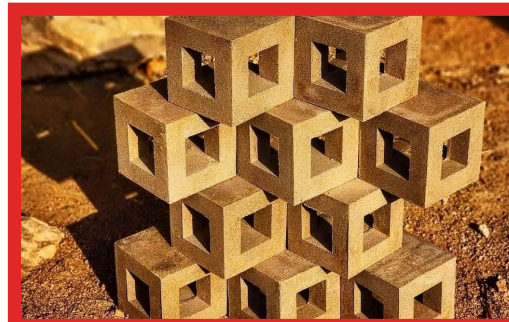
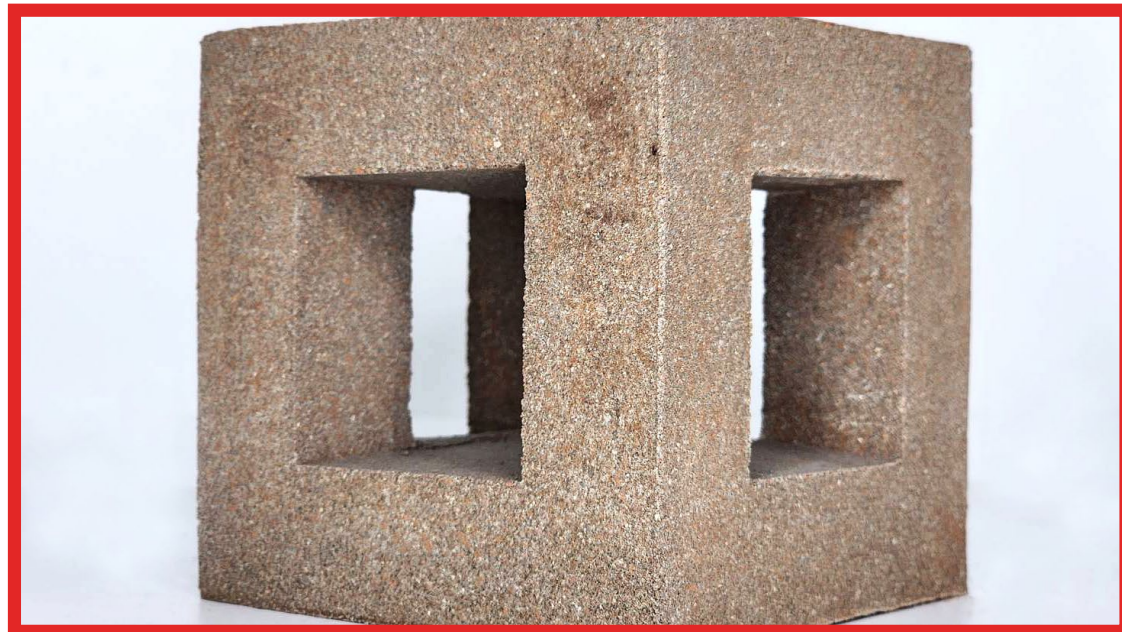
# SPARKSMAG BRICK COMPATIBLE MAGNETIC VEHICLE TRACKS



**DESIGNER**  
SPARKSMAG  
(CREATIVE ORIGINS OFFICIAL)

To help toddlers develop fine motor skills, creativity and STEM learning, Vroom Car City Tracks offers an innovative, modular magnetic vehicle track system. This interactive toy allows kids to independently build their own road networks, promoting hands-on learning and problem solving. Made from durable, child-safe materials and inspired by Singapore's cityscape, it inspires creativity and builds independence.

# VENTILATION BLOCK – AIR FLOW (BTL201)



**DESIGNER**  
MFLEX FACTORY CO. LTD.  
(MANITTHAR RAISAENG)

Blending design and durability, Air Flow (BTL201) is a concrete vent block structural function with visual appeal. Designed for easy reinforcements without cutting, it features both transparent and solid faces for flexible use.

Made with a soil-concrete mix, it offers natural textures without synthetic dyes. Its four-square design creates shifting light and shadow effects, adding movement and depths to facades.

# WIZFLO HAND SHOWER RANGE



**CLIENT**  
AMERICAN STANDARD

**DESIGNER**  
LIXIL - ASIA  
(LIXIL GLOBAL  
DESIGN TEAM, ASIA)

The WizFlo Hand Shower Range solves low water pressure issues in Asian homes using PressurePlus technology, delivering a powerful spray while saving up to 40% more water. Its modular design reduces waste, with variants offering spray adjustments and detachable heads for cleaning. This gives homeowners the opportunity to choose designs that best suit their lifestyle while promoting water conservation and responsible usage.



**MAKE  
YOUR  
MARK**

# SPATIAL DESIGN

SG Mark Winners 2025

SPATIAL DESIGN

## APARTAMENTO MIRO



**DESIGNER**  
PI ARCHITECTS (IVAN SOH)

A static 3,800 sqft apartment becomes Apartamento Miró – a living canvas inspired by the surreal energy of Joan Miró. Art and architecture collide in bold geometrics, tactile materials, and fluid spatial transitions.

At the center is a sunken lounge and a glowing wine cellar, forming the heart of the home. Around it, open spaces encourage gathering, while the bedrooms are placed at the edges for peace and privacy.



SPATIAL DESIGN

# CIVIL SERVICE COLLEGE LEARNING OASIS



**CLIENT**  
CIVIL SERVICE COLLEGE

**DESIGNER**  
D'PERCEPTION RITZ PTE LTD

The Civil Service College Learning Oasis reimagines a utilitarian space into an inspiring hub for Singapore's public officers. Featuring biophilic and zen elements, it offers flexible learning areas, quiet zones, and collaborative spaces. Sustainability is prioritised by preserving key architectural features, maximising natural light, and using energy-efficient systems.

SPATIAL DESIGN

# COLIWOO BUKIT TIMAH FIRE STATION



**DESIGNER**  
COLIWOO

The Waking Up Bukit Timah Fire Station project restores the 1909 fire station, transforming it into a sustainable, mixed-use development.

The proposal creates a community hub with co-living spaces, public areas for urban farming, wellness, and nature activities, connected to the Rail Corridor and Upper Bukit Timah.



# EDL SHOWCASE GALLERY



**CLIENT**  
EDL PTE LTD

**DESIGNER**  
THE AFTERNAUT GROUP  
(GWEN TAN)

More than just a showroom, the EDL Gallery redefines how we engage with materials – blending design, education, and sustainability into a thought-provoking journey. Located in an industrial estate, it surprises visitors with immersive zones, light-labs for testing finishes, and a physical gallery complemented by a digital portal that is accessible through the 3D QR code.

# FANZIGOU PARK- DAYDAY EXPERIMENTAL BASE



**CLIENT**  
CHIAYI CITY GOVERNMENT

**DESIGNER**  
MIMICO SPACE  
DESIGN STUDIO  
(CHIU HSIN HSIEN,  
TENG CHU LING &  
CHIU CHIAO LIN)

Next to Fan Zai Kou Park, DAYDAY Experimental Base is a vibrant lifestyle hub blending cafe, bar, exhibition, and community space.

Part of Chiayi's twin park plan under the "Cultural New Silk Road 2.0" vision, it transforms an old wooden house into a cultural anchor themed "Modern Chiayi". Merging heritage with urban living, its tiered seating encourages interactions across all ages.



SPATIAL DESIGN

# HONG KONG SANATORIUM & HOSPITAL STAFF CANTEEN & PHARMACY



**CLIENT**  
HONG KONG SANATORIUM  
& HOSPITAL

**DESIGNER**  
ONE BITE DESIGN  
STUDIO LIMITED

The newly renovated 1,000 sqm staff canteen and pharmacy at Hong Kong Sanatorium & Hospital integrates wellness and sustainability.

Completed in early 2024, the space features natural light, green tones, and flexible layouts, promoting a calming environment for both staff and patients.

SPATIAL DESIGN

# ISLAND MADE



**DESIGNER**  
LIGHT ISLAND INTERIOR  
DESIGN CO., LTD.  
(WU CHIEN-HSUN, WU BO-WEI)

This three-story office reimagines a century-old building into a relaxed, creative workplace. Designed on-site without formal plans, it blends vintage elements, natural wood, and outdoor features.

Burnt cedar walls lead to a 2F workspace and balcony, topped by a retro meeting room. Local materials and traditional craft preserve the heritage while fostering modern work styles.



# KAPLAN CITY CAMPUS @ ODEON 333



**CLIENT**  
KAPLAN HIGHER  
EDUCATION ACADEMY

**DESIGNER**  
3ISTUDIO CONSULTANTS  
PTE LTD (YOU WEN JUAN),  
WONG SOON FOUNG  
(PROJECT DIRECTOR))

The renovated campus merges sustainability, innovation, and inclusivity to create a dynamic, student-first environment. Flexible, tech-enabled classrooms support diverse learning styles, while green-certified systems and eco-friendly materials reflect a strong ESG commitment.

Open lounges, wellness rooms, and collaborative spaces foster well-being and connection.

# NCS B2 OFFICE



**CLIENT**  
NCS PTE LTD

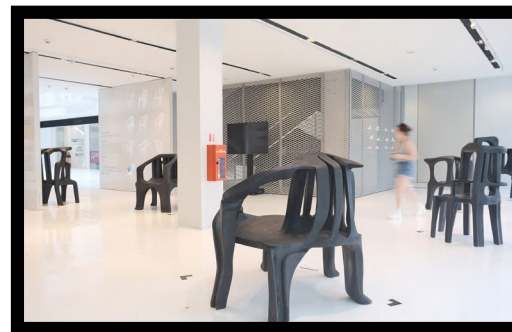
**DESIGNER**  
3ISTUDIO CONSULTANTS PTE  
LTD (WONG SOON FOUNG)

The 40,000 sf Sparks office at NCS Hub is co-working space designed for innovation, featuring tech-enabled workstation, vibrant meeting rooms, and cozy breakout areas. A dome-lit informal zone and unmanned cafeteria enhance collaboration and convenience.

Sustainability is central – materials like fire-rated doors, chopsticks, chipboards, and rice husk were repurposed into furniture and finishes.



# NEURAL MONOBLOC BLACK

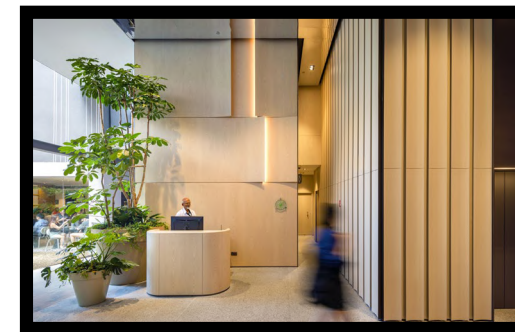


**CLIENT**  
SINGAPORE UNIVERSITY OF  
TECHNOLOGY AND DESIGN

**DESIGNER**  
ARTIFICIAL-ARCHITECTURE  
(IMMANUEL KOH)

The Neural Monobloc Chair critiques modern design by reinterpreting the ubiquitous plastic Monobloc chair. Using a specialised text-to-3D AI model, the chairs are crafted from upcycled, charred teak with a design that encourages social interaction and improves spatial flow. It challenges overconsumption and proposes a new model combining AI with artisanal work to create meaningful, functional spaces.

# ODEON 331



**CLIENT**  
UOL GROUP LIMITED

**DESIGNER**  
DP DESIGN  
(ALLAN WANG, JARED NG  
& REYNALDO LACTAOEN)

The renewed Odeon Towers lobby transforms a once-cramped space into a vibrant, naturally ventilated hub that blends work, leisure, and community.

By removing the old facade, the design introduces a through-block link connecting Victoria Street, North Bridge, and Bras Basah Complex, seamlessly integrating nature, outdoor seating, and F&B options.



# SHEIN



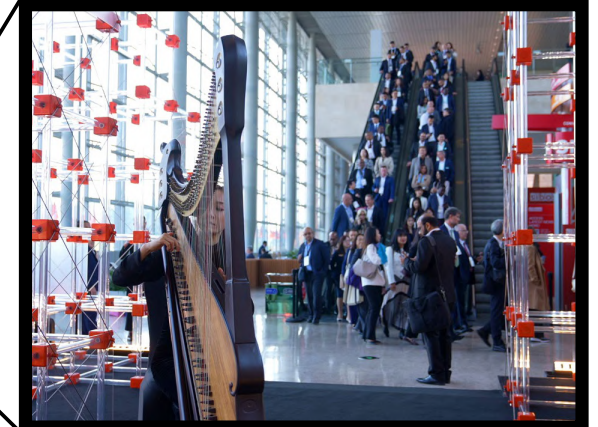
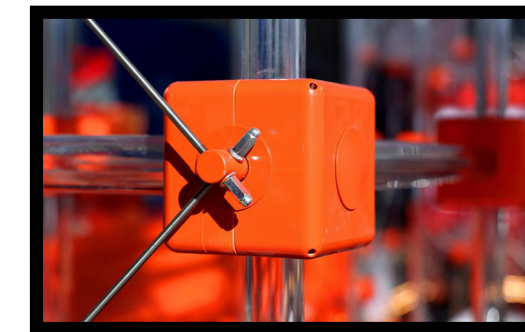
CLIENT  
SHEIN

DESIGNER  
ID21 PTE LTD

SHEIN's first Singapore office at Marina Bay Financial Centre reflects its bold, diverse-fashion identity.

Designed by ID21, the space that was inspired by the multifaceted women features distinct zones – such as sleek reception, vibrant social hub, and biophilic elements that support creativity, flexibility and employee well-being.

# SIBOS BEIJING: EMBODYING THE SYNERGY OF CONNECTION



CLIENT  
SWIFT

DESIGNER  
PICO ART INTERNATIONAL  
PTE LTD, MP INTERNATIONAL  
PTE LTD & AIRLAB@SUTD

At Sibos 2024, The Nexus of Connections reimaged the future of financial spaces.

This 8x8m modular installation of 2,700 interlocking acrylic bars and 1,000 3D-printed nodes symbolised global connectivity through form and function. Built without traditional frameworks, its fully reusable, parametric design fused sustainability with innovation, transforming the space into an immersive, interactive hub.



SPATIAL DESIGN

# SONY MUSIC MUMBAI OFFICE



**CLIENT**  
SONY MUSIC ENTERTAINMENT  
INDIA PVT. LTD.

**DESIGNER**  
M. MOSER ASSOCIATES

Sony Music's Mumbai office is a cultural and creative hub designed to reshape India's music landscape. Rooted in Sony's values of diversity, passion, and innovation, it blends global energy with Indian identity in a club-like, collaborative environment. With sustainable materials, low-VOC paints, and smart systems, the office isn't just a workplace – it is a catalyst for artistic growth and industry transformation.

SPATIAL DESIGN

# THE QUIETUDE RESIDENCE



**DESIGNER**  
CRAFTSMEN STUDIO  
(TRISTAN WU)

This apartment is a serene retreat for a young couple, blending Scandinavian minimalism with smart spatial planning. Earthy tones, natural textures, and Carl Hansen pieces create a calming, cohesive space. Full-height windows open to MacRitchie Reservoir views, enhancing the connection to nature. Refined and practical, the home embodies minimalist living that's beautiful, flexible, environmentally conscious.



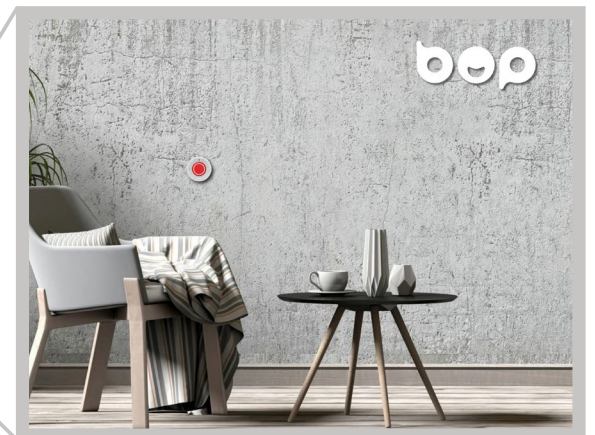
**MAKE  
YOUR  
MARK**

## SPECIAL CATEGORY **SILVER FUTURES**

SG Mark Winners 2025

SILVER FUTURES

## **BUDDY OF PARENTS – BOP BUTTON**



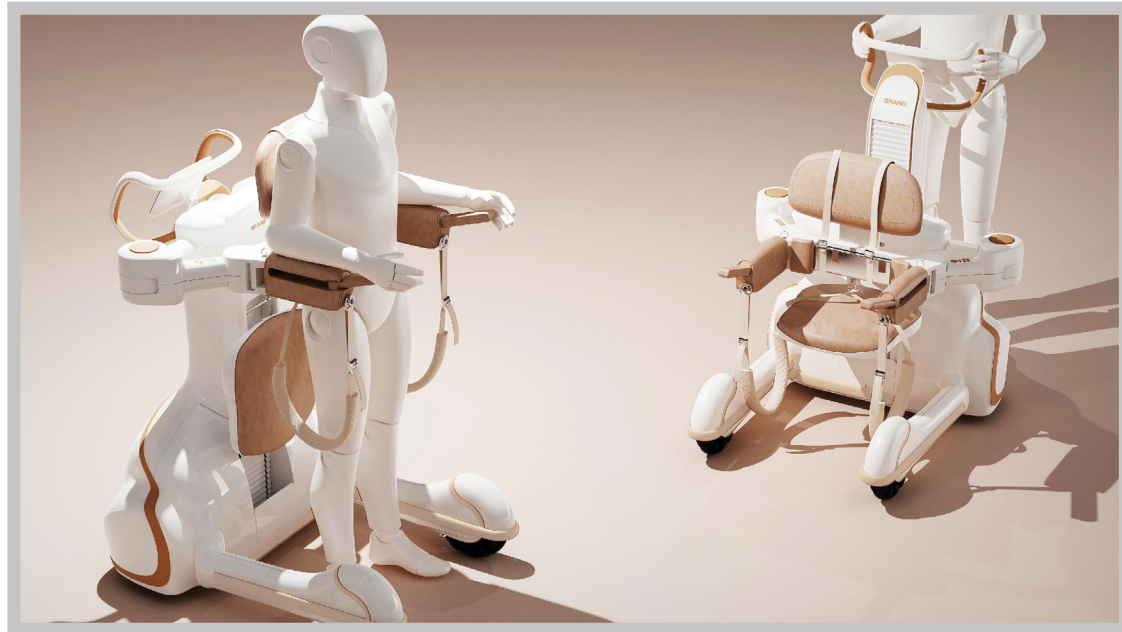
**CLIENT**  
BOP PTE. LTD.

**DESIGNER**  
CEREBRUM DESIGN CO., LTD.  
(MAKORN CHAOVANICH)

The BOP Button offers a simple, one-touch emergency solution for seniors. Using 4G technology, it enables immediate voice communication with a 24/7 response center. The large, accessible button is designed for seniors with varying physical abilities, while the mobile app notifies caregivers instantly.



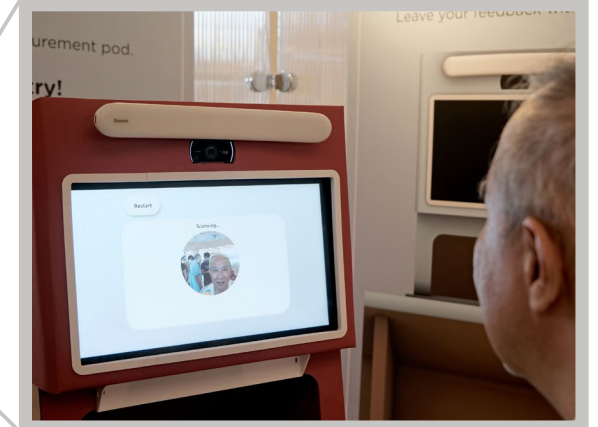
# REBALANCE – STEADY STEPS, CONFIDENT MOVES



**DESIGNER**  
ABILITY ROBOTICS PTE. LTD.  
(LI LEI, ANG WEI TECH)

ReBalance, born from a decade of research at Nanyang Technological University, uses therapist-inspired robotic arms and Proactive BalanceGuard technology to help users regain walking independence. It provides invincible support during balance loss, ensuring safety while maintaining confidence and dignity.

# RPPG EXPERIENCE ZONE



**CLIENT**  
GOVERNMENT TECHNOLOGY  
AGENCY (GOVTECH)

**DESIGNER**  
TRIGGER DESIGN

Co-developed with GovTech, the rPPG Station offers seniors simple, contactless health checks using an initiative, single-button interface. Piloted at two hubs with 416 users, 65.2% preferred the contactless method, showing strong adoption.

Made from eco-friendly cardboard with SP's FabLab, it supports preventive care under Healthier SG, making health monitoring accessible and sustainable for seniors.



# ST LUKE'S ELDERCARE SENIOR CARE CENTRE @ WHAMPOA



**CLIENT**  
ST LUKE'S ELDERCARE

**DESIGNER**  
ID21 PTE LTD

St Luke's ElderCare Centre blends local heritage, nature, and modern design to create a welcoming, home-like environment. Inspired by Hoo Ah Kay, it uses biophilic elements like natural light and greenery to promote well-being.

Inclusive and accessible, it features flexible furniture and a rehab zone with nature views.

# TELECONSULTATION KIT FOR SENIORS



**CLIENT**  
GOVERNMENT TECHNOLOGY AGENCY (GOVTECH)

**DESIGNER**  
TRIGGER DESIGN

Developed with GovTech, the kit combines a tablet, BP monitor and medication drawer – mirroring seniors' habit of storing health items together.

This intuitive setup encourages daily use, seamless data syncing, and supports preventive care, empowering seniors to manage their health independently at home.



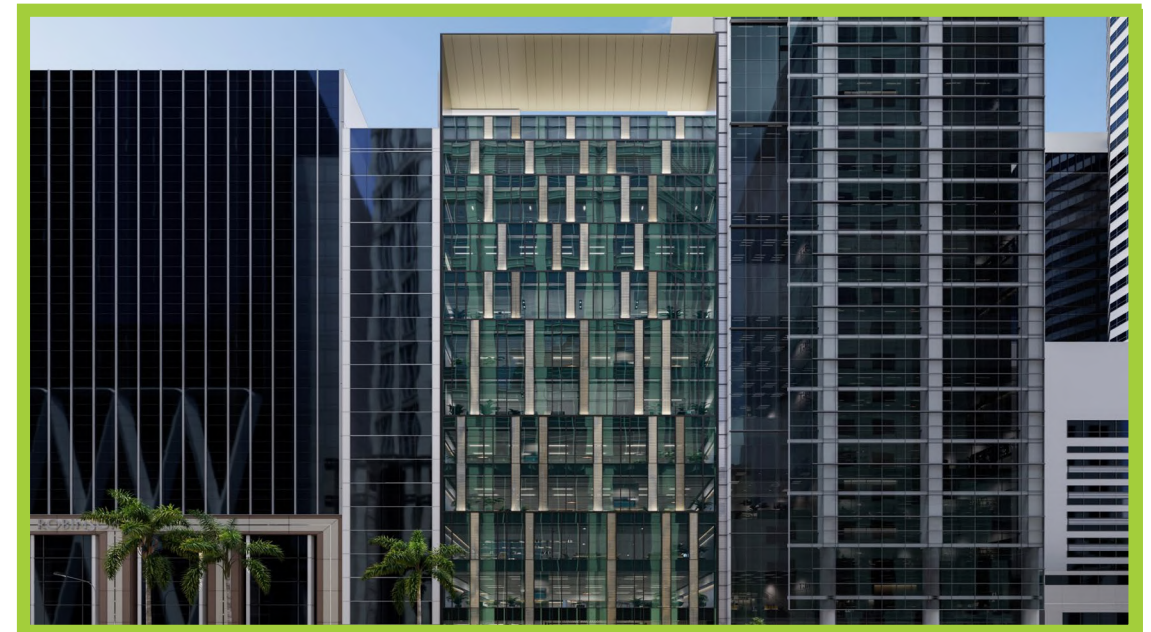
**MAKE  
YOUR  
MARK**

# SUSTAINABLE DESIGN

SG Mark Winners 2025

SUSTAINABLE DESIGN

## 108 ROBINSON ROAD



**CLIENT**  
PGIM REAL ESTATE

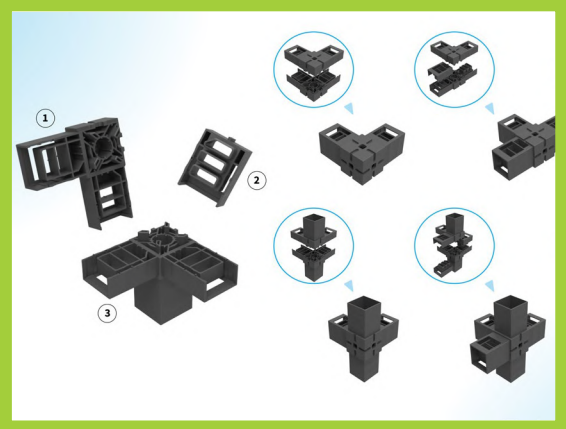
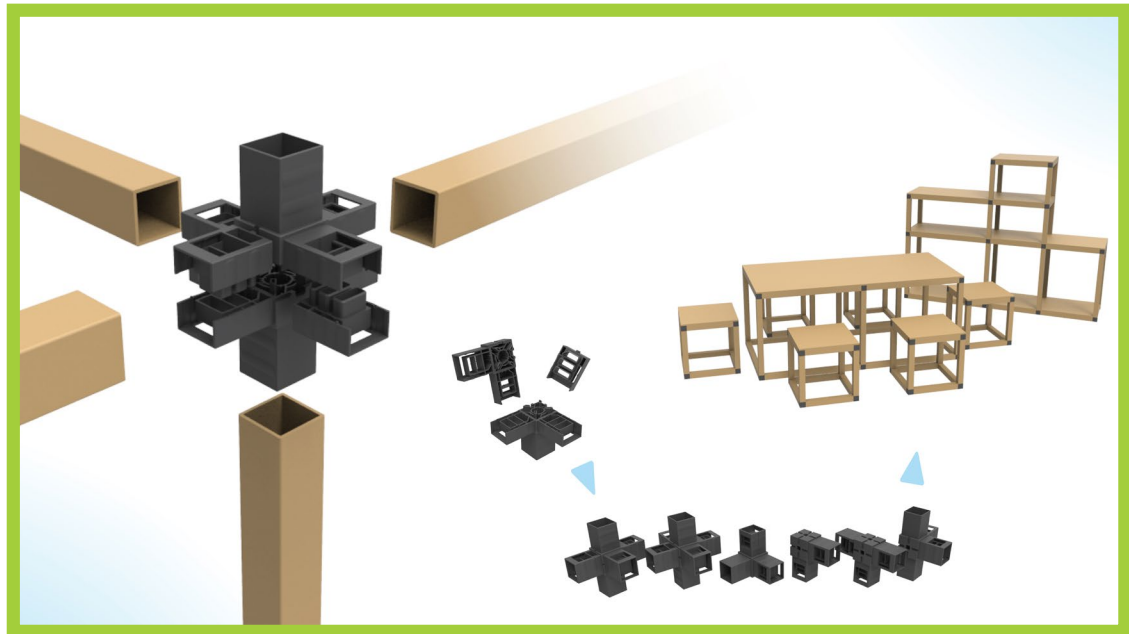
**DESIGNER**  
SAA ARCHITECTS PTE LTD

In Singapore CBD, 108RR, a 50-year-old building by PGIM Real Estate, is being revitalised with a focus on sustainability.

The refurbishment preserves the existing structure, saving 950 tons of CO2 emissions. Upgrades like mixed-mode ventilation reduce indoor CO2 by 40%, while energy efficiency improves by 30%.



# PAPERCONNECT™



**DESIGNER**  
PAPER CARPENTER PTE LTD  
(ADRIAN CHUA)

PaperConnect is a modular construction system that merges sustainability with creative freedom. Using durable connectors made from recycled textile pellets, it links paper bars and cardboard to build furniture, backdrops, and booths. Its easy assembly and reusable design suit temporary and customisable setups, with future app or AI integration offering personalised design guides.

# SINGAPORE PAVILION AT COP29, THE UNITED NATIONS CLIMATE CHANGE CONFERENCE



**CLIENT**  
COP29 SINGAPORE PAVILION  
STEERING COMMITTEE, LED BY  
MINISTRY OF SUSTAINABILITY  
AND THE ENVIRONMENT

**DESIGNER**  
PICO ART INTERNATIONAL  
(PICO CREATIVE STUDIO)

The Singapore Pavilion featured the Vanda Miss Joaquim, crafted from 414 meters of repurposed metal and 3D-printed petals, symbolising resilience and sustainability.

Featuring eco-friendly design and a digital exhibit, the Pavilion cut carbon emissions by 21 tonnes and reached over 600,000 people worldwide, inspiring thousands both on-site and online.



SUSTAINABLE DESIGN

# SINGTEL SINGPOST CENTRE OFFICE



**CLIENT**  
SINGAPORE  
TELECOMMUNICATIONS LTD

**DESIGNER**  
M. MOSER ASSOCIATES

During the Comcentre redevelopment, 4,000 Singtel staff moved to a flexible interim HQ at SingPost Centre. Designed by M Moser, the agile workspace features touchdown zones, collaborative hubs, and biophilic elements to foster connection and well-being. With 90% of furniture reused and low-carbon materials, the projects cut its carbon footprint by 28.5%, setting a benchmark for adaptive, sustainable workplaces.



# VISUAL DESIGN

# HACTL MID-AUTUMN FESTIVAL GIFT SET 2024





# SAI KUNG HOI ARTS FESTIVAL 2022-2024



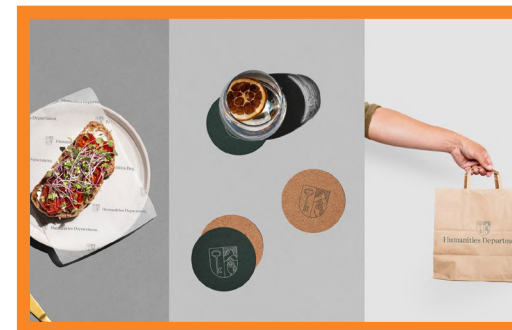
**CLIENT**  
TOURISM COMMISSION,  
HKSAR GOVERNMENT

**DESIGNER**  
ONE BITE DESIGN  
STUDIO LIMITED

Sai Kung Hoi Arts Festival (2022-2024) is a 3-year celebration of art, nature, and community across four islands in Hong Kong.

With the theme "Joy Again, Isle," its evolving design blends heritage and sustainability through mountain motifs, vibrant colors, and eco-conscious features like reusable maps and solar kiosks.

# THE HUMANITIES DEPARTMENT



**CLIENT**  
THE SOCIAL KITCHEN

**DESIGNER**  
THE AFTERNAUT GROUP

The Humanities Department is a social enterprise partnering with organisations to drive inclusive progress. Through accessible F&B spaces and thoughtful design, it empowers individuals of all abilities and redefines social good.

Rejecting charity, it equips marginalised groups for meaningful work, aiming to double Singapore's inclusive workforce and show that design and inclusion can become second nature.



# 2024 TOP WINNERS

PLATINUM WINNER



SPECIAL CATEGORY: HEALTH & WELLNESS

## SILVER PRIDE LION TROUPE

CLIENT  
LIEN FOUNDATION

DESIGNER  
NEXTOKIN CREATIVES &  
BRIDGING GENERATIONS

GOLD WINNER



EXPERIENCE DESIGN

## RE-ROUTE FESTIVAL

CLIENT  
SINGAPORE TOURISM BOARD

DESIGNER  
PLUS COLLABORATIVES

GOLD WINNER



SUSTAINABLE DESIGN

## SUMU YAKUSHIMA – REGENERATIVE LIFE STUDIO

CLIENT  
SUMU YAKUSHIMA

DESIGNER  
TONO INC. (TSUKASA ONO)



SPECIAL MENTION



SPATIAL DESIGN

# 001 BAR TAI KWUN

CLIENT  
001 BAR

DESIGNER  
CANALSIDE STUDIO  
(FRANCIS LAM, ETAIN HO)

SPECIAL MENTION



PRODUCT DESIGN

# ION M1-S

DESIGNER  
ION MOBILITY PTE. LTD  
(ION TEAM)

SPECIAL MENTION



EXPERIENCE DESIGN

# A BRUSH WITH FOREST FIRE

CLIENT  
NATIONAL GALLERY SINGAPORE,  
KEPPEL CENTRE OF ART EDUCATION

DESIGNER  
THE MERRY MEN WORKS,  
MAKE STUDIOS

SPECIAL MENTION



PRODUCT DESIGN

# LUNA MENSTRUAL DISPOSAL STATION

CLIENT  
KOHLER CO.

DESIGNER  
KOHLER CO, KOHLER DESIGN  
& TRIGGER DESIGN



SPECIAL MENTION



ARCHITECTURE

# OLA HALE – RESTAURANT & BAR

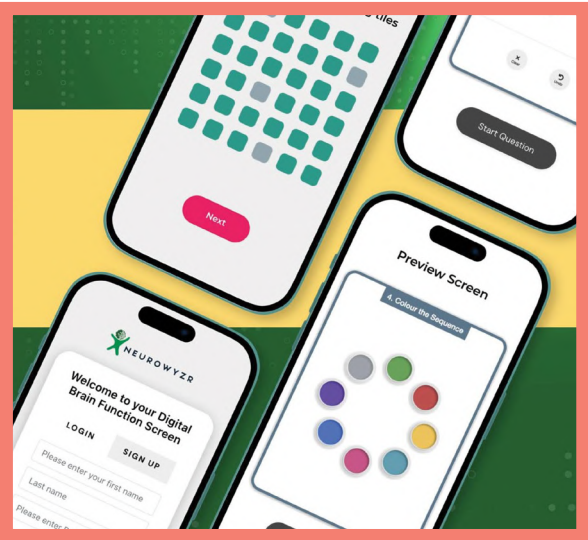
CLIENT

OLA HALE - RESTAURANT & BAR

DESIGNER

CHIO ARCHITECTS  
(AR. CHIO WEN TIAN, CHUA YIXI)

SPECIAL MENTION



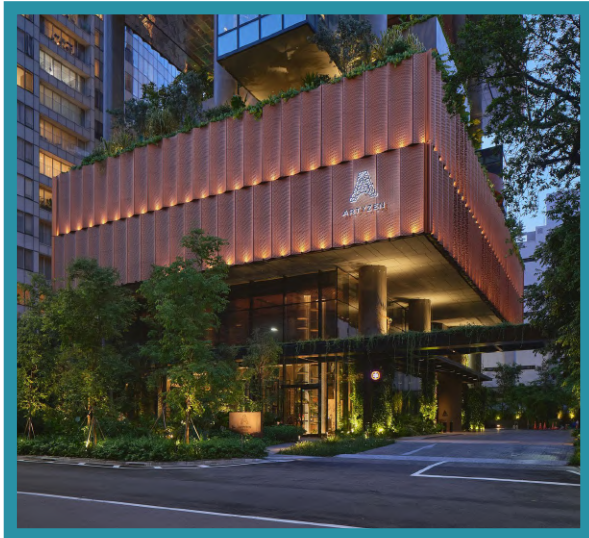
SPECIAL CATEGORY:  
HEALTH & WELLNESS

# PIONEERING EARLY BRAIN DECLINE DETECTION WITH NEUROWYZR'S DIGITAL BRAIN FUNCTION SCREEN (DBFS)

DESIGNER

NEUROWYZR PTE LTD

# 2024 JAPAN'S GOOD DESIGN AWARD (G-MARK) WINNERS



ARCHITECTURE

**ARTYZEN  
SINGAPORE**

CLIENT  
SHUN TAK HOLDINGS LIMITED

DESIGNER  
ONG&ONG



PRODUCT DESIGN

**GROHE PURE  
RO SYSTEM**

CLIENT  
GROHE

DESIGNER  
LIXIL - ASIA (LIXIL GLOBAL  
DESIGN TEAM, ASIA)



PRODUCT DESIGN

**BIO-HOME LAUNDRY  
SHEET DETERGENT**

DESIGNER  
LAM SOON SINGAPORE PTE LTD



PRODUCT DESIGN

**HP 22 INCH  
ALL IN ONE**

DESIGNER  
HP INC. (HP DESIGN)

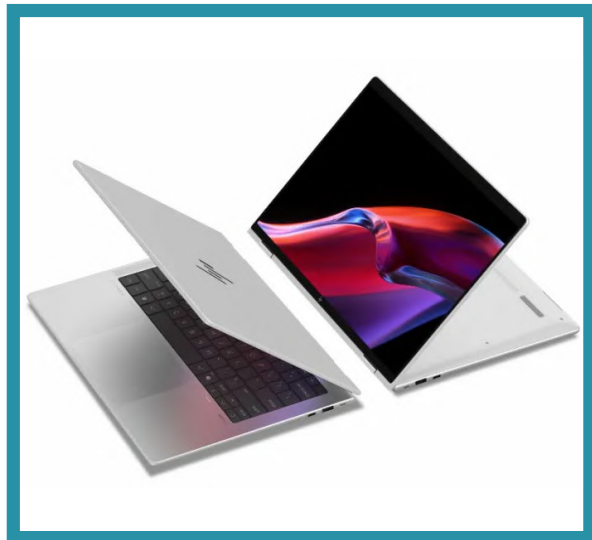




PRODUCT DESIGN

## HP 727PM

DESIGNER  
HP INC. (HP DESIGN)



PRODUCT DESIGN

## HP ELITE 1040 X 360 G11 2-IN-1 NOTEBOOK PC

DESIGNER  
HP INC. (HP DESIGN)



PRODUCT DESIGN

## HP ERGONOMIC WIRELESS KEYBOARD

DESIGNER  
HP INC. (HP DESIGN)



PRODUCT DESIGN

## HP ENVY MOVE

DESIGNER  
HP INC. (HP DESIGN + NATIVE)



PRODUCT DESIGN

## HP SPECTRE X360 14 & 16 INCH 2-IN-1 LAPTOP PC

DESIGNER  
HP INC. (HP DESIGN + NATIVE)



SPATIAL DESIGN

## PAST . PRESENT . FUTURE

DESIGNER  
URBAN HOME DESIGN 二本設計家 -  
YII JIN JIN (EMMA YII),  
WONG KEN YUEH (KEN)

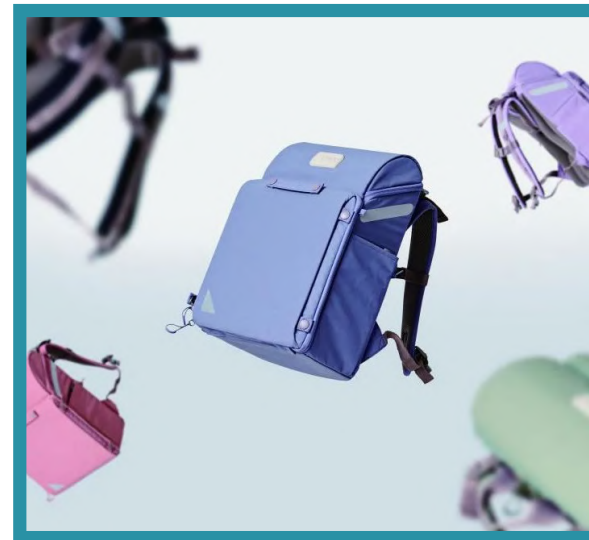


PRODUCT DESIGN

## POLY SURROUND 85 UC

CLIENT  
HP INC.

DESIGNER  
POLY DESIGN



PRODUCT DESIGN

## SMART KID SCHOOL BAG 3.0 PLUS

DESIGNER  
PUGO CO., LTD. (CHEN TZU HSIEN)



SPECIAL THANKS

PARTNERSHIPS

ORGANISED BY



OVERSEAS PARTNER



MEDIA PARTNER



OFFICIAL PHOTOGRAPHER



EVENTS PARTNER



SUPPORTED BY



OUTREACH PARTNERS



## CONTACT US

For more information, please  
visit [www.sgmark.org](http://www.sgmark.org) or  
email us at [info@sgmark.org](mailto:info@sgmark.org).



Singapore Good Design Mark



Design Business Chamber Singapore



Design Business Chamber Singapore



dbcsingapore